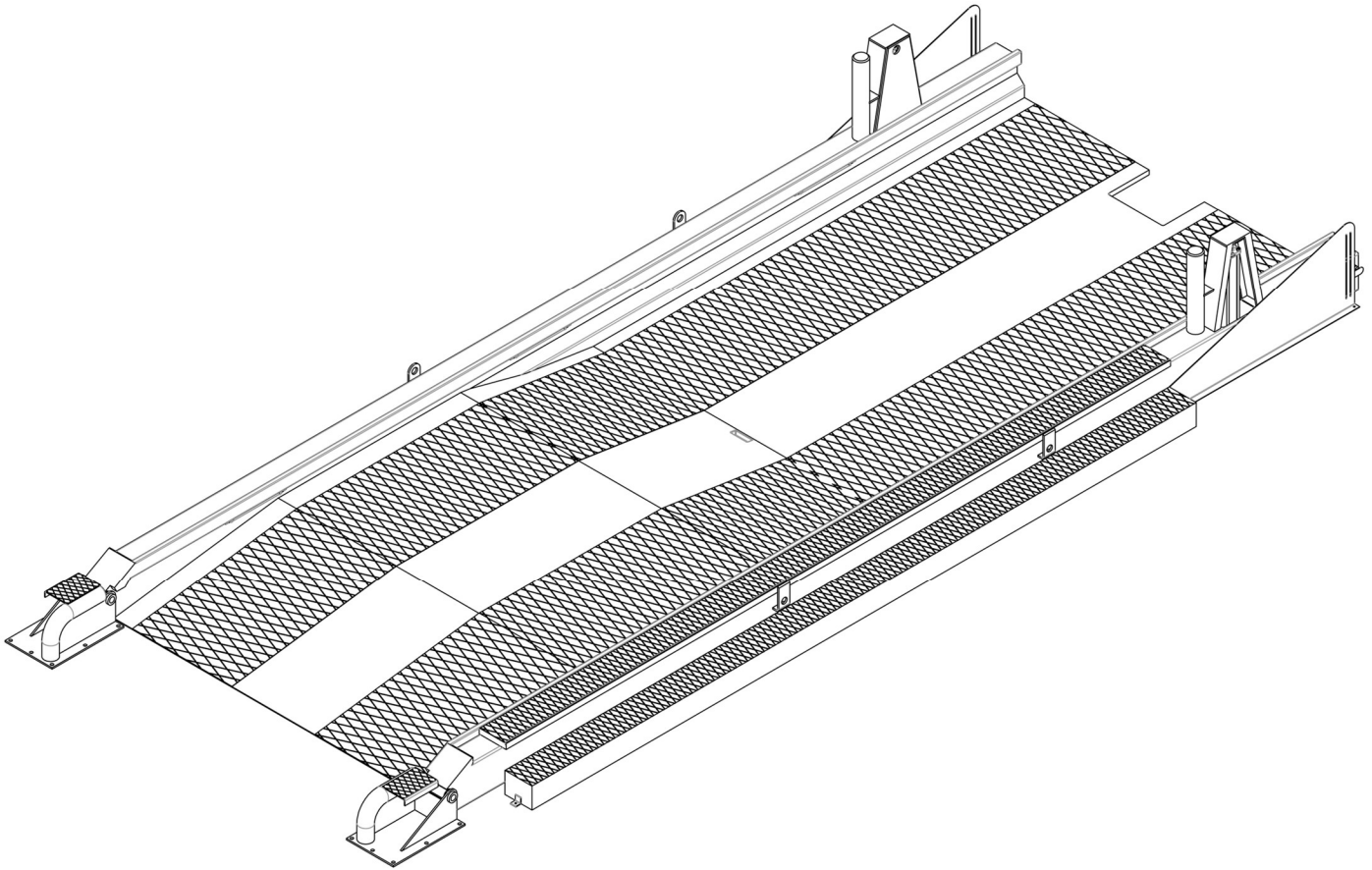




UNIVERSAL HYDRAULIC RISER (UHR) OWNER'S MANUAL



⚠ WARNING

Do not install, operate, or service this product unless you have read and understand the Safety Practices, Warnings, Installation and Operating Instructions contained in this User's Manual. Failure to do so could result in death or serious injury.

NOTES

TABLE OF CONTENTS

INTRODUCTION	3
OWNER RESPONSIBILITY	4
SAFETY WARNING DEFINITIONS	4
PRODUCT SAFETY WARNINGS	5
FEATURES	5
OPERATION INSTRUCTION	6
MAINTENANCE	7
LOCKOUT / TAGOUT PROCEDURE	7
TROUBLESHOOTING AND ADJUSTMENT	9
HYDRAULIC SCHEMATIC	10
ELECTRICAL SCHEMATICS	11
CONTROL BOX SCHEMATIC	11
HYDRAULIC POWER UNIT ENCLOSURE SCHEMATIC	13
REPLACEMENT PARTS - OUTSIDE	14
REPLACEMENT PARTS - INSIDE	15
REPLACEMENT PARTS - HYDRAULICS	16
REPLACEMENT PARTS LIST	17
STANDARD WARRANTY	19

INTRODUCTION

The Universal Hydraulic Riser is a hydraulically actuated lift designed to lift the rear of a trailer or vehicle to better align the bed height for easier and safer loading and unloading. It is controlled using a push button located on a control box on the inside of a building.

WARRANTY

See Back of Owner's Manual

IMPORTANT

Read and understand contents of this manual prior to installation or operation of this equipment.

PATENTS

The Dockzilla® Co. Products in the manual are covered by one or more patents. Visit <https://dockzilla.com/patents> for details.

CAPACITY

The Universal Hydraulic Riser has a **total gross load** capacity of **60000 lbs (27216 kg) [moving or static]**, this includes the weight of any vehicle that must enter the trailer to load or unload product.

A **per axle** capacity of **20000 lbs (7938 kg) [moving]** also applies for moving loads, which does not include the weight of any vehicle used for loading or unloading while the trailer is stationary.



***NEVER exceed
rated capacity***

OWNER RESPONSIBILITY

1. The owner should recognize the inherent danger of the interface between dock and transport vehicle. The owner should, therefore, train and instruct operators in the safe use of dock equipment in accordance with the information provided below. The manufacturer shall provide to the initial purchaser, and make the following information readily available to the owner:

- Installation instructions
- Recommended initial and periodic inspections procedures.
- Maintenance procedures
- Operating instructions
- Descriptions or specifications for replaceable or repairable parts

2. It shall be the responsibility of the owner to verify that the material listed in this section has been received and that it is made available for the instruction and training of personnel entrusted with the use or maintenance of the dock equipment.

3. When a transport vehicle is parked at a loading dock, it is important that the vehicle is relatively perpendicular to the dock face and in close contact with at least one of the dock bumpers

4. Nameplates, cautions, instructions, and posted warnings shall not be obscured from the view of operating or maintenance personnel for whom such warnings are intended.

5. Manufacturer's recommended periodic maintenance and inspection procedures in effect at date of shipment shall be followed, and written records of the performance of these procedures should be kept.

6. Dock equipment that is structurally damaged shall be removed from service, inspected by a manufacturer's authorized representative, and repaired as needed before being placed back in service.

7. The manufacturer shall make available replacement nameplates, caution/instruction labels, and operating/maintenance manuals upon request of the owner. The owner shall see that all nameplates, caution/instruction markings or labels are in place and legible, and that the appropriate operating/maintenance manuals are provided to users.

8. Modifications or alterations of dock equipment shall be made only with written permission of the original manufacturer. These changes shall also satisfy all safety recommendations of the original equipment manufacturer for the particular application of the dock equipment.

9. When industrial trucks are driven on and off transport vehicles during the loading and unloading process, the brakes on the transport vehicle shall be applied and wheel chocks or a positive restraining device shall be engaged.

SAFETY WARNING DEFINITIONS

DANGER

DANGER statements indicate an imminently hazardous situation. Failure to follow the listed instructions will result in serious injury or death!

CAUTION

CAUTION statements indicate a potentially hazardous situation. Failure to follow the listed instructions may result in minor to moderate injury or property damage!

WARNING

WARNING statements indicate a potentially hazardous situation. Failure to follow the listed instructions may result in serious injury or death!

NOTICE

NOTICE statements are used to indicate procedures that must be followed to avoid equipment or property damage.

PRODUCT SAFETY WARNINGS

⚠ DANGER

ALWAYS ensure loading dock is clear of personnel when operation vehicles in the area.

NEVER preform maintenance without using proper Lockout/Tagout procedures according to OSHA regulations.

⚠ CAUTION

Follow the maintenance schedule to ensure that there are no broken parts that might cause injury to workers or damage to the equipment.

NEVER raise or lower the unit with personnel on or around the hydraulic riser.

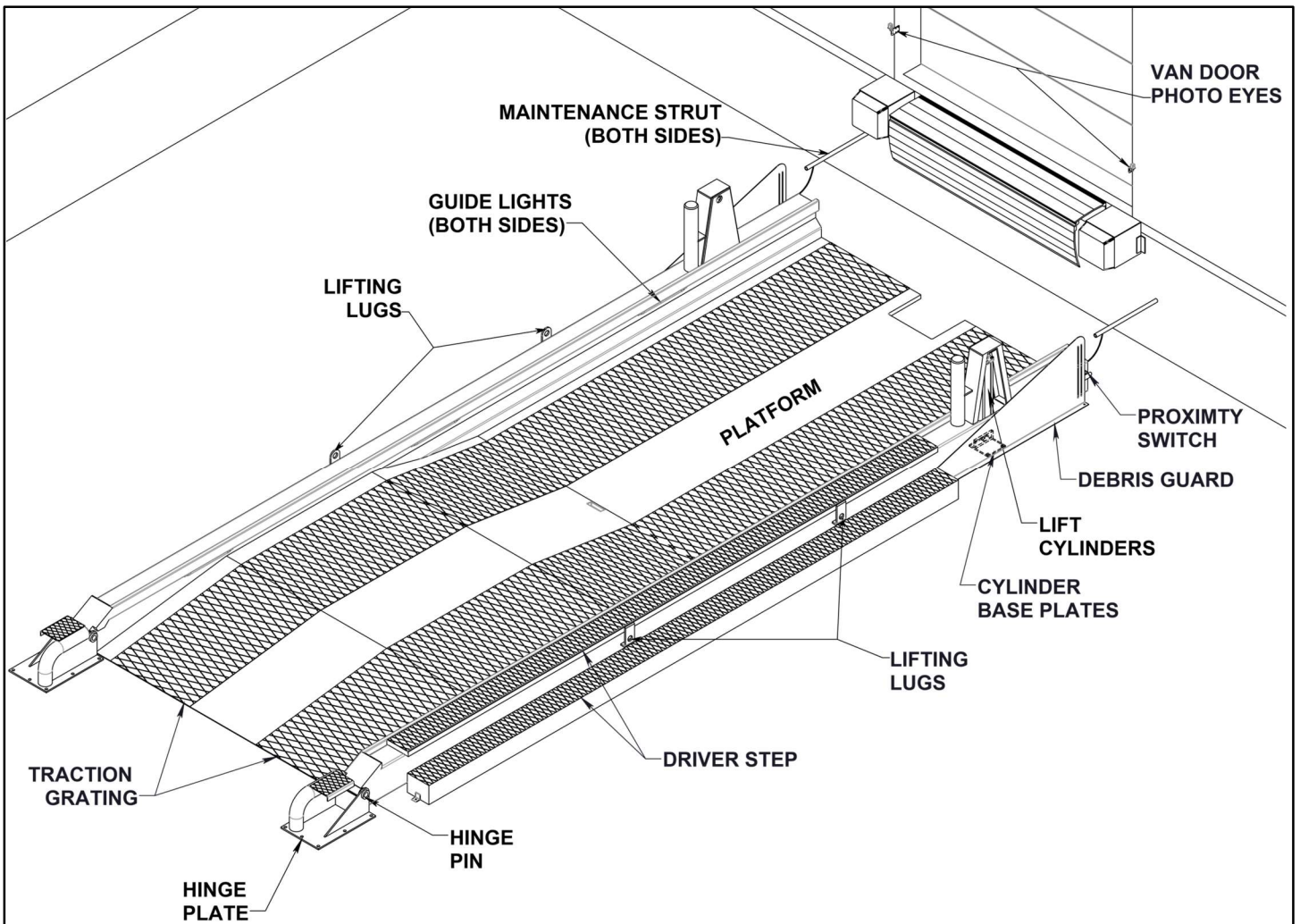
⚠ WARNING

NEVER perform maintenance without barricading the work area to warn that work is being done.

NEVER exceed the rated load capacity

If a malfunction occurs, contact Dockzilla Co. or local representative and discontinue use of dock to ground ramp until the issue has been resolved.

FEATURES



OPERATION INSTRUCTION

1. No trailer at dock with closed dock door.
 - a. **BLUE** light next to the **LOWER** button is **ON** signaling the hydraulic riser is completely lowered.
 - b. Lights along the side of the hydraulic riser are **GREEN**.
2. Back vehicle onto hydraulic riser.
3. Restrain vehicle/trailer via wheel chocks or mechanical means.
4. Open dock door.
 - a. Lights of the the hydraulic riser will turn **RED** indicating to the driver that it is **NOT** safe leave the dock.
5. Lift vehicle to desired level by pressing and holding the **RAISE** pushbutton.
6. Activate dock leveler or use a portable dock plate (if applicable) to bridge the gap from dock to truck.
7. Once loading is complete, store dock leveler or dock plate.
8. Press and hold the **LOWER** pushbutton until unit is completely stored at grade level and the inside **BLUE** light is **ON**
9. Close dock door.
 - a. Lights on the hydraulic will turn **GREEN** indicating to the driver that it is safe leave to leave the dock.
10. Remove wheel chocks or mechanical restraints.
11. Drive vehicle slowly off the hydraulic riser to not damage truck or riser.

WARNING

Read and obey these instructions to prevent personal injury.

DO NOT operate the lift until truck/trailer is parked against the dock bumpers and the truck/trailer has been secured.

ALWAYS secure load when using the dock lift.

NEVER enter a truck/trailer until its brakes are set, air has been dumped from the air ride suspension (if applicable), and you have visually inspected truck/trailer to ensure truck/trailer is securely held in place by a vehicle restraint or wheel chocks per OSHA regulations.

NEVER release the vehicle restraint or remove the wheel chocks until loading/ unloading is finished and the truck driver has been given permission to drive away from the dock.

CAUTION

Hydraulic riser MUST be stored in the completely lowered position to avoid damage to the building and/ or equipment as new trailers back into the dock.

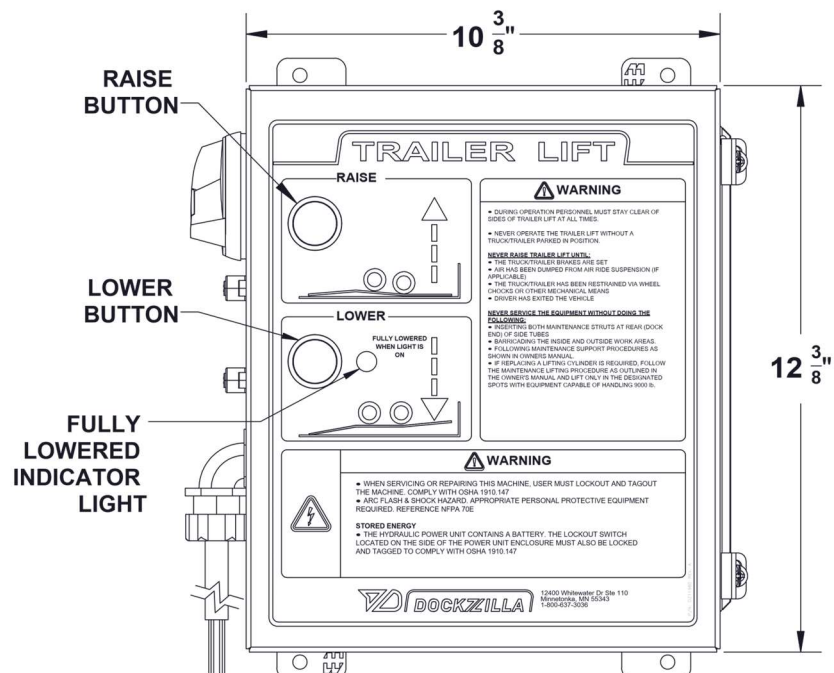


FIGURE 4: CONTROL BOX

MAINTENANCE

⚠ WARNING

STORED ENERGY:

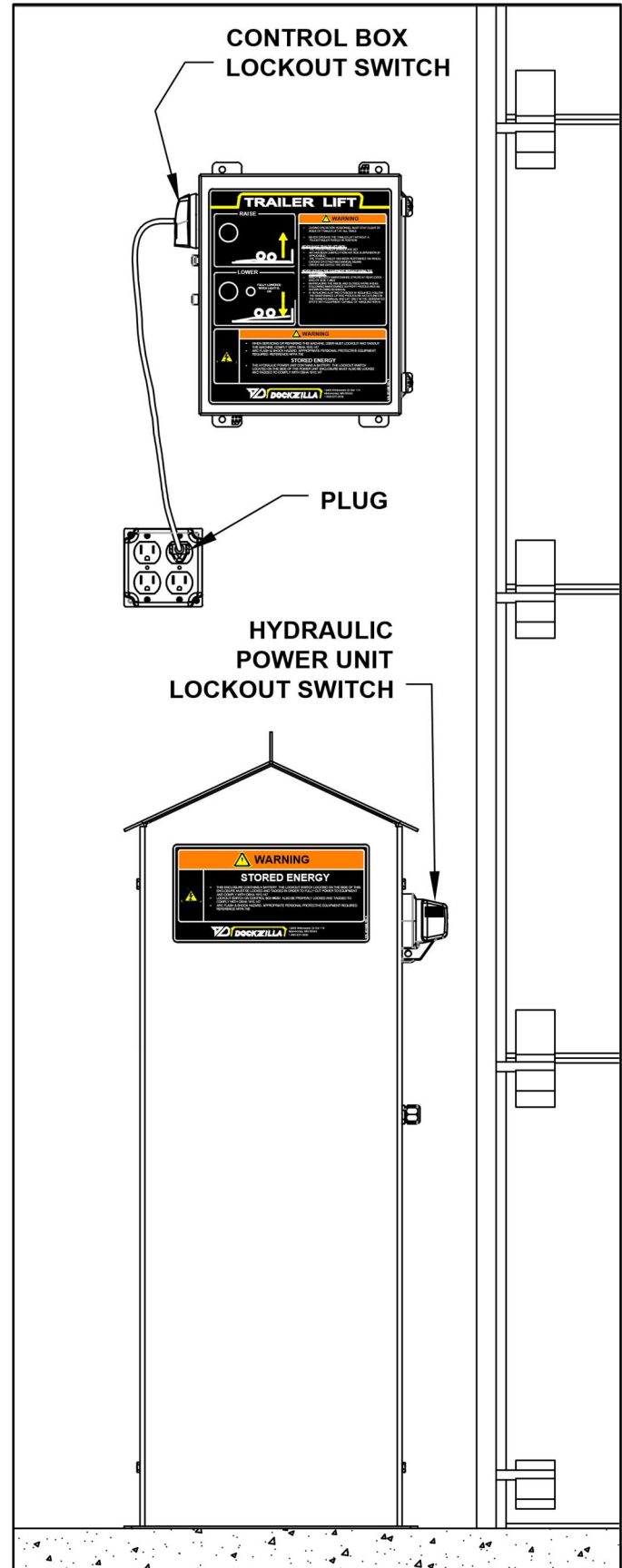
The hydraulic power unit enclosure contains a battery. The lockout switch located on the side of this enclosure must be locked and tagged to comply with osha 1910.147

ARC FLASH & SHOCK HAZARD:

Appropriate personal protective equipment required. Reference NFPA 70e in order to fully cut power to equipment and comply with osha 1910.147

LOCKOUT / TAGOUT PROCEDURE

1. Turn the Lockout switch located on the side hydraulic power unit to the off position.
 - a. Follow OSHA 1910.147 lockout & tagout procedure to secure switch.
2. Turn the lockout switch located on the side of the control box to the off position.
 - a. Follow OSHA 1910.147 lockout & tagout procedure to secure switch.
 - b. Pull out white tab to access lockout hole.
3. Unplug the control box from power outlet.



MAINTENANCE (CONT.)

DAILY

1. During normal operation, inspect and report any damaged parts or erratic operation. If there are any broken or worn parts repair as needed.
2. Check traction grating for damage that may puncture or damage tires.
3. Clean large debris or ice build-up from the dock area. **DO NOT USE SALT.**

Recommended Ice melt Product:

Ossian Select® Liquid De-Icer.

⚠ DANGER

Lockout/Tagout power to the equipment according to OSHA regulations before performing any maintenance on and equipment.

⚠ WARNING

Post safety warnings and barricade work area, at dock level and at ground level, to prevent unauthorized use of the dock position.

QUARTERLY

1. Perform all Daily Maintenance.
2. Grease front hinge points.
3. Oil lift cylinder pins (SAE 30 oil).
4. Check fluid level. If unit is low of fluid, refill and inspect hoses and fittings for damage or leaks.
5. Check to make sure that the debris guards are not damaged or missing.
6. Inspect unit for any structural damage.
7. Re-torque any loose anchors.

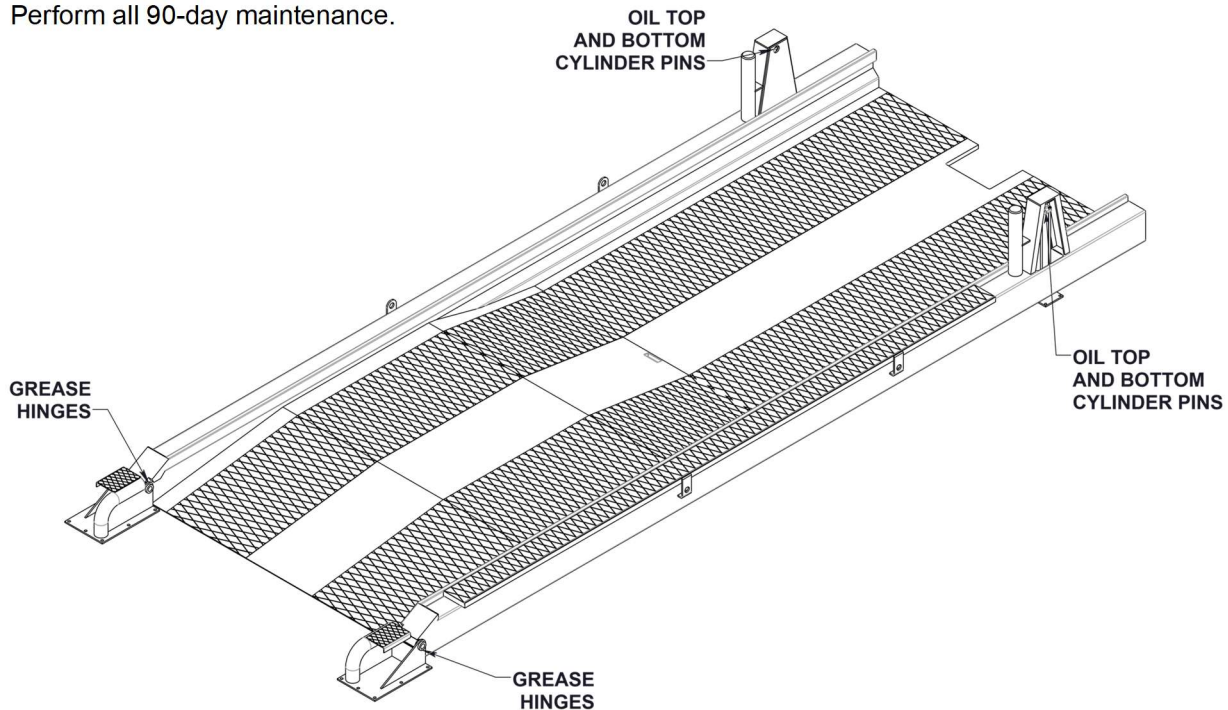
NOTICE

Maintenance may be required more frequently at loading docks exposed to harsh environments (extreme climates, corrosive chemicals, frequency of usage exceeding 8 vehicles per day, etc.). Consult Dockzilla Co. if these conditions exist for accelerated maintenance requirements.

DO NOT USE SALT. If necessary, use a non-corrosive ice melt product. Recommended Ice melt Product: **Ossian Select® Liquid De-Icer.**

YEARLY

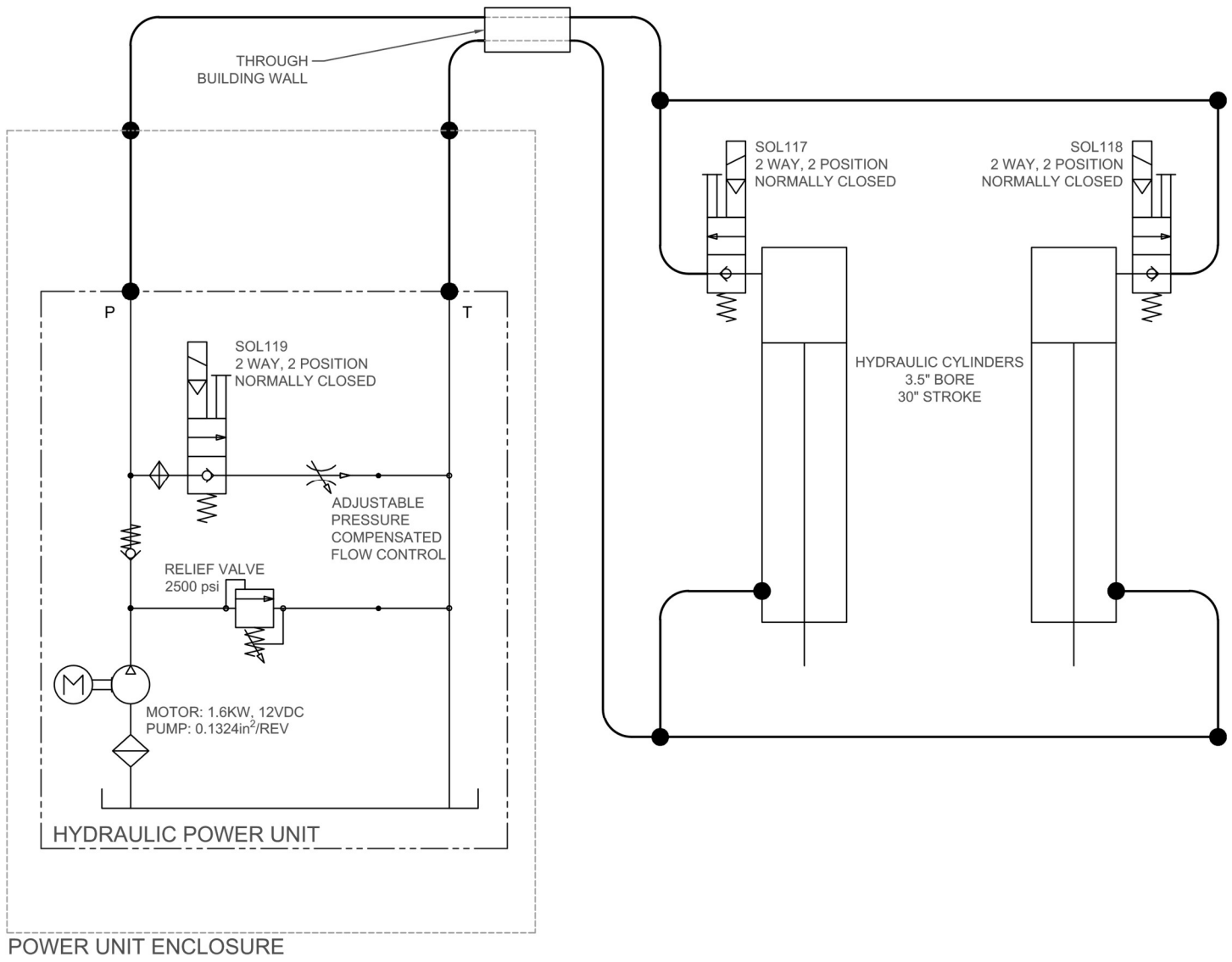
1. Perform all 90-day maintenance.



TROUBLESHOOTING AND ADJUSTMENT

Symptom	Probable Causes	Remedy
Platform does not lift.	<ul style="list-style-type: none"> a. Excessive Load. b. Fuse and/or overload blown. c. Low/bad battery d. Low oil level and/or oil leak. e. Defective pump. f. Defective valve. g. Filter is clogged. 	<ul style="list-style-type: none"> a. Remove load. b. Check fuse and/or overloaded reset. c. <ol style="list-style-type: none"> 1. Check power to control box. 2. Check that battery charger is functioning properly. 3. Test battery health, if bad replace. d. Check oil level. Check for leaks that may have caused low oil level. e. Check system pressure. If pressure is too low the pump may be worn out. Replace if necessary. f. Check valve block. Repair/Replace if necessary. g. Clean or replace suction filter
Platform does not maintain steady height.	<ul style="list-style-type: none"> a. Oil Leak. b. Defective check valve. c. Defective solenoid valve. 	<ul style="list-style-type: none"> a. Replace damaged hoses or parts. b. Replace check valve. c. Replace solenoid valve.
Platform locked in "UP" position.	<ul style="list-style-type: none"> a. Something physically obstructing platform. b. Solenoid valves not getting power. c. Defective solenoid valve. d. Van door photo eye fault. e. Flow control valve closed. 	<ul style="list-style-type: none"> a. Remove obstruction. b. Repair connections to valves. c. Replace solenoid valves. d. Verify photo eye alignment, adjust if needed. e. Adjust Valve, see "Flow Control Adjustment" below.

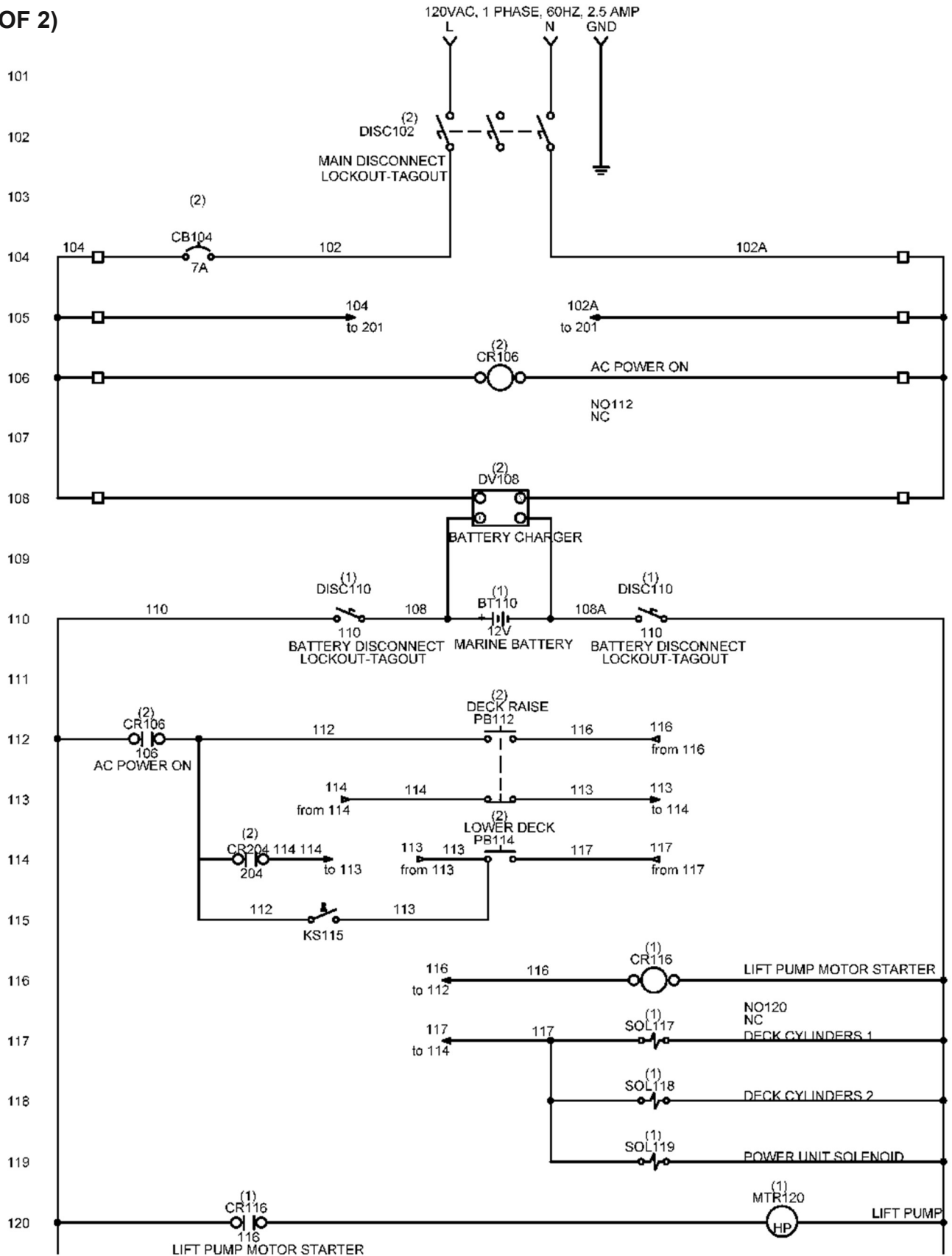
HYDRAULIC SCHEMATIC



ELECTRICAL SCHEMATICS

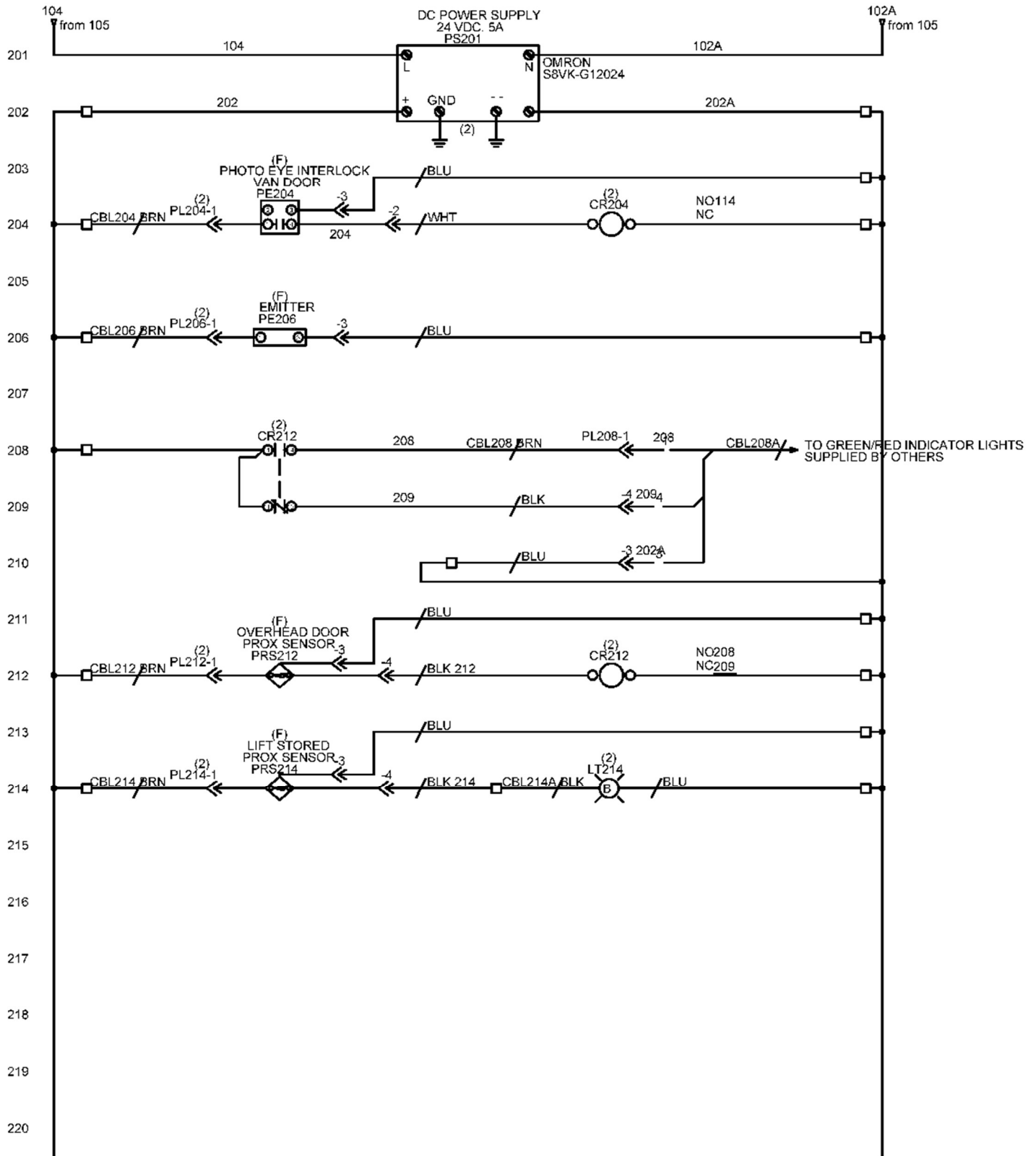
CONTROL BOX SCHEMATIC

(1 OF 2)

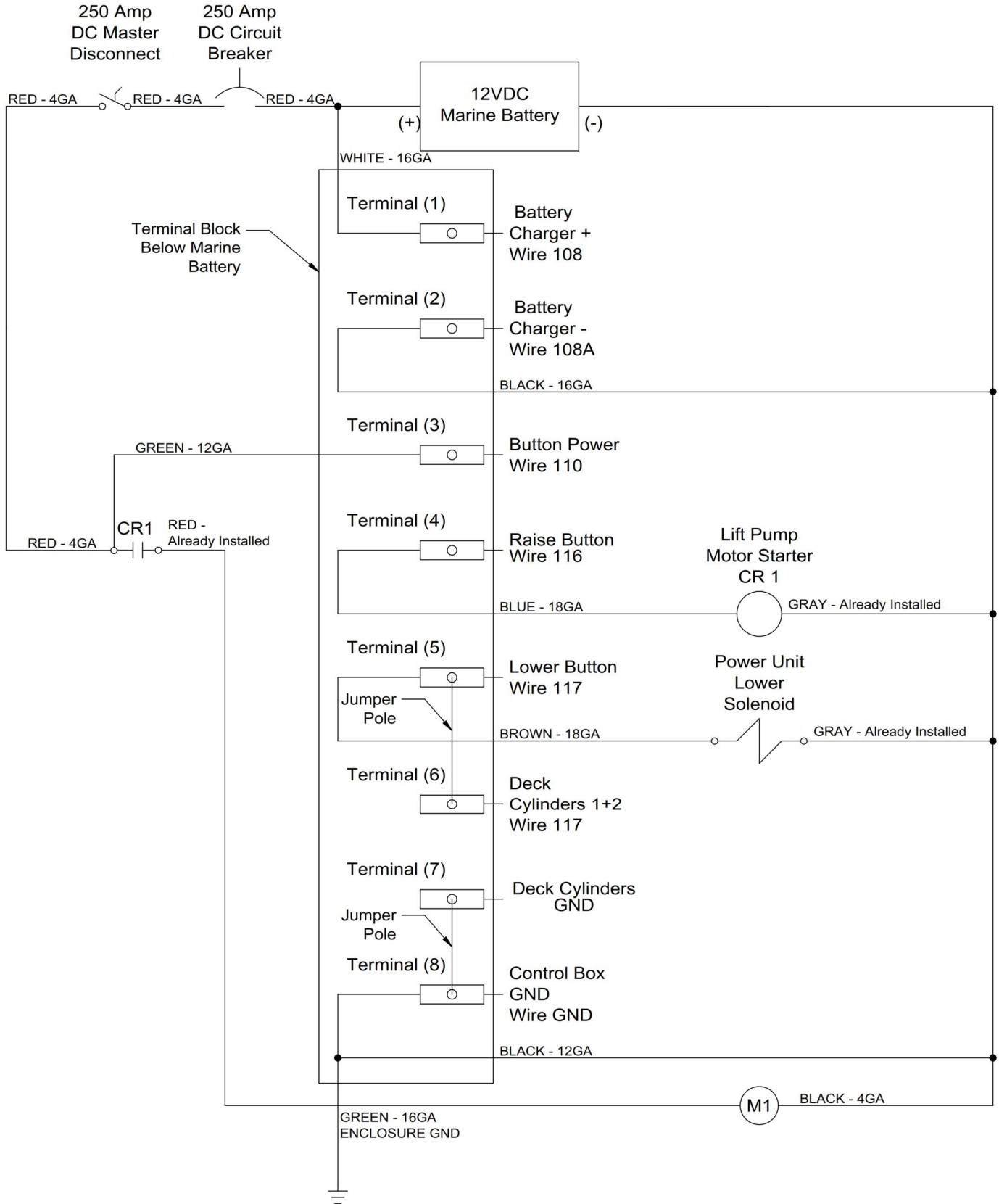


CONTROL BOX SCHEMATIC

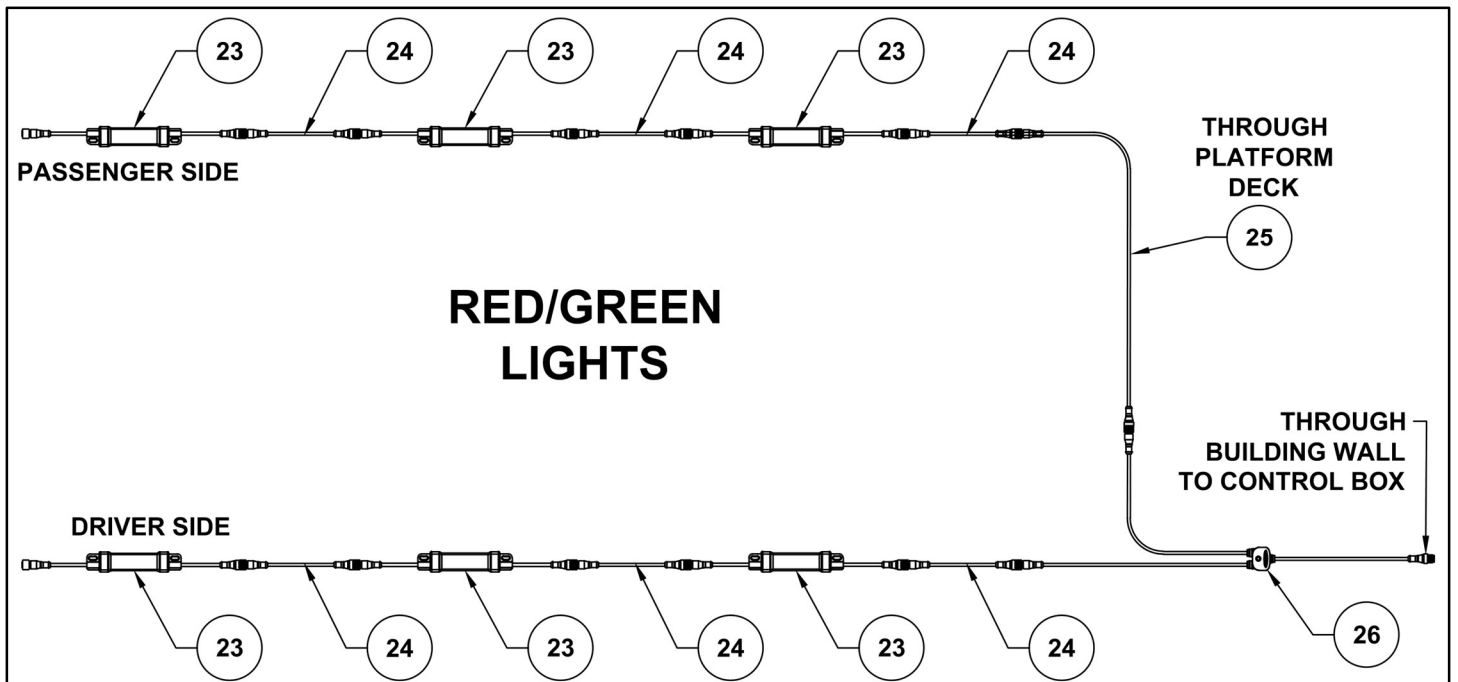
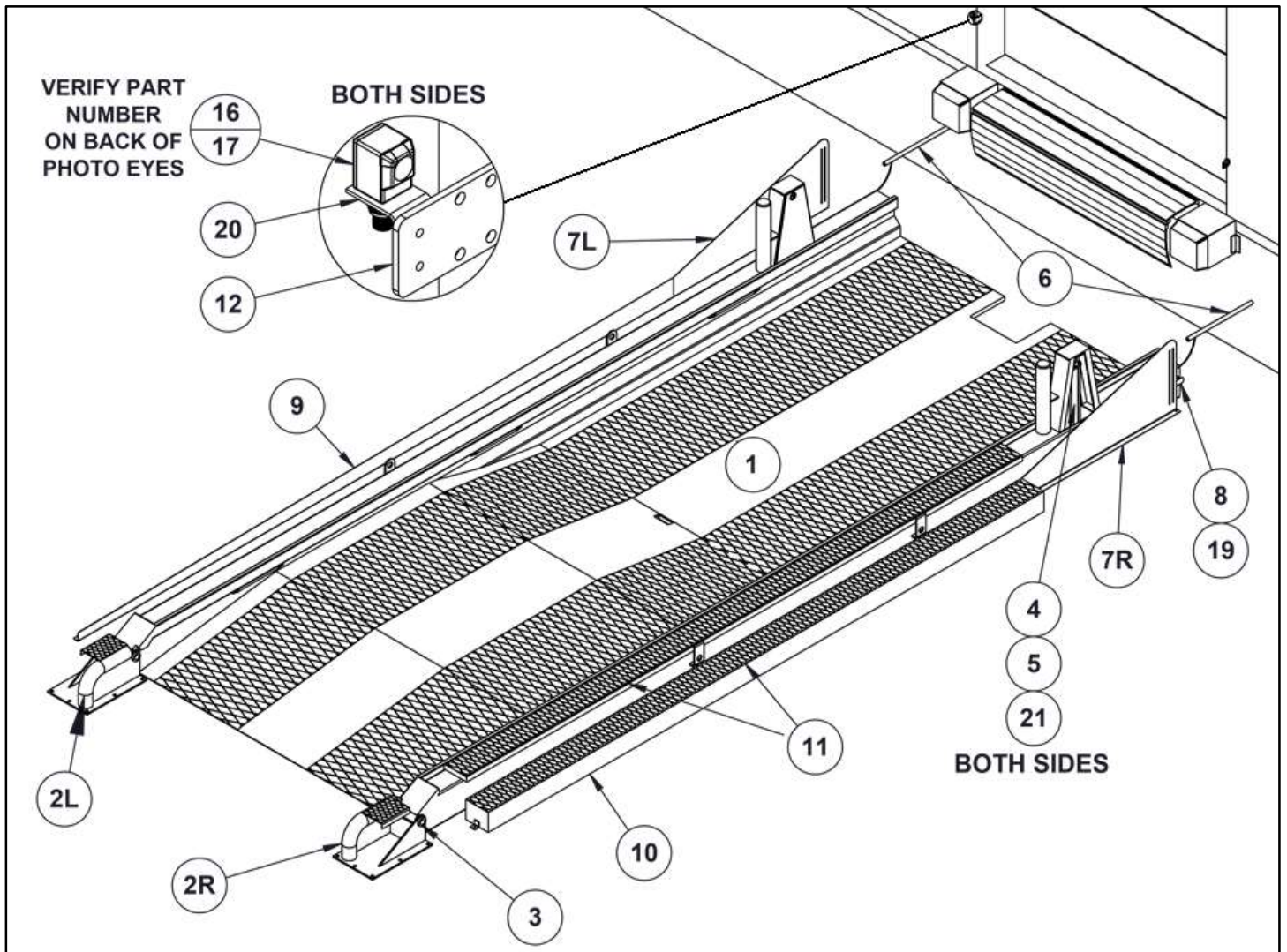
(2 OF 2)



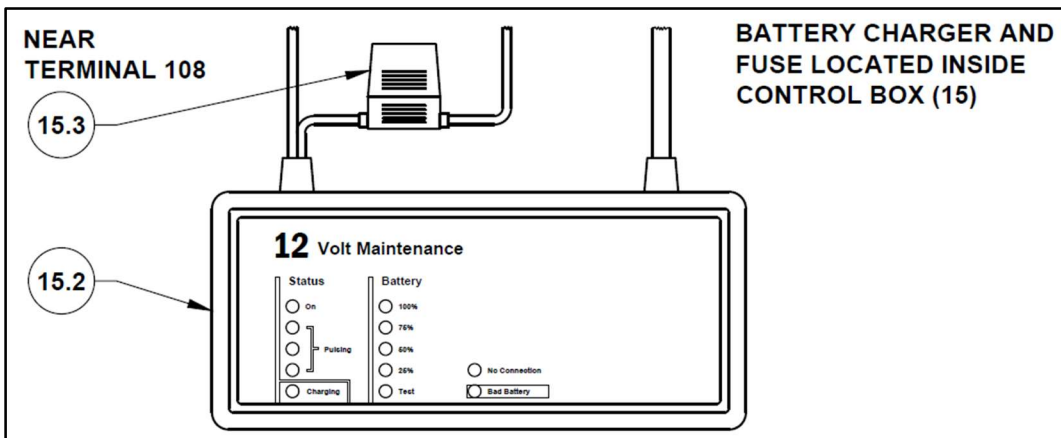
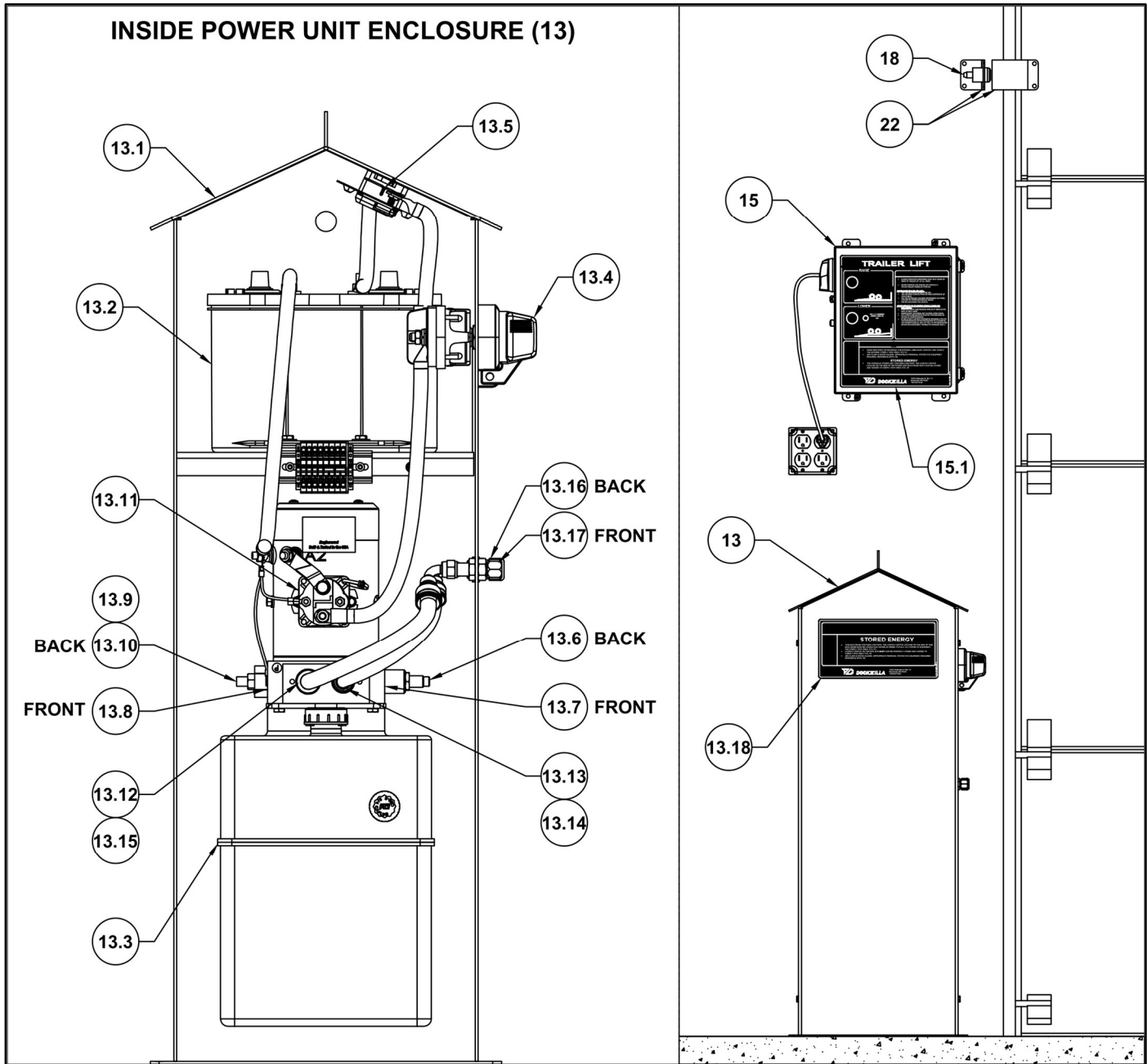
HYDRAULIC POWER UNIT ENCLOSURE SCHEMATIC



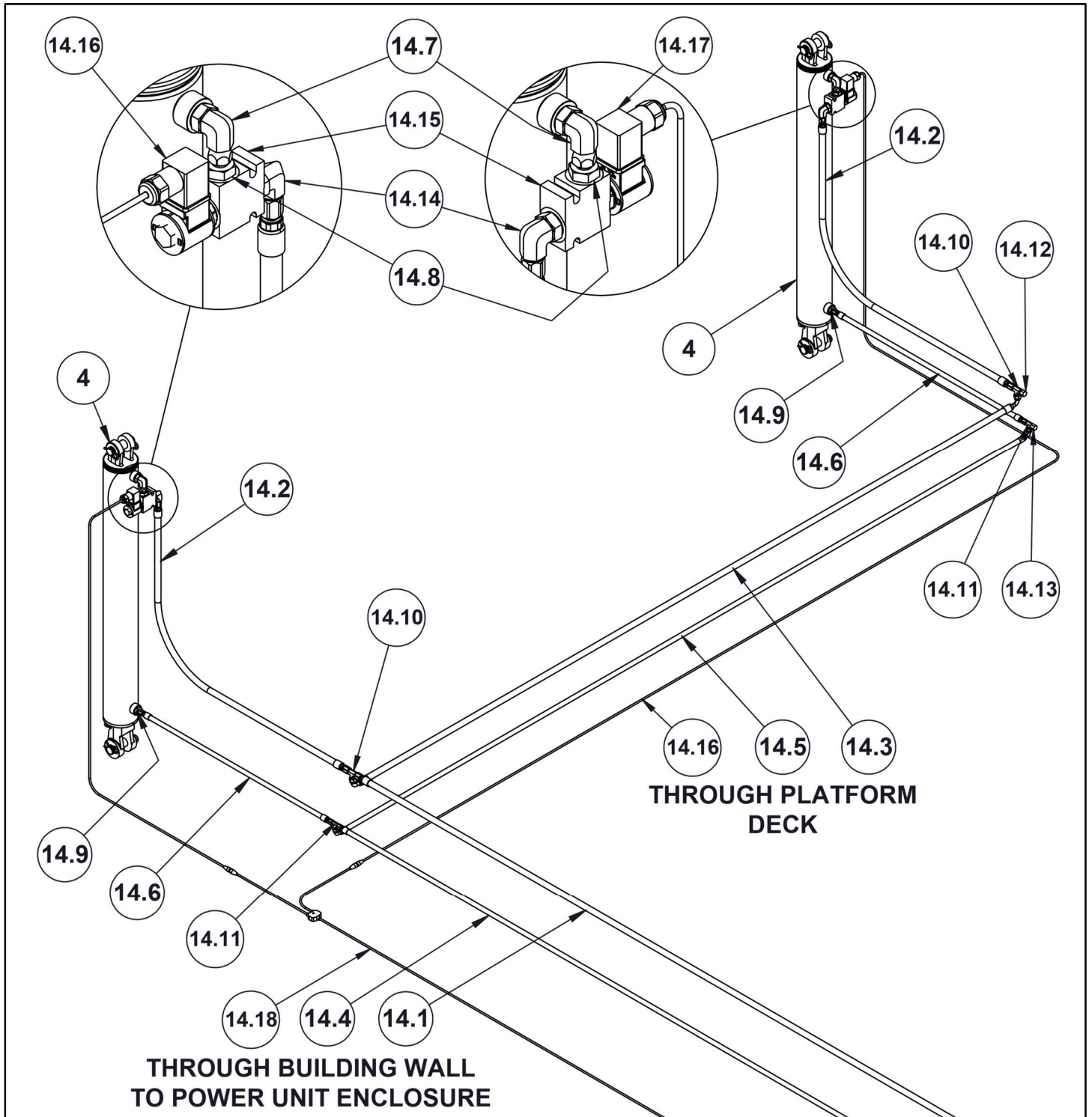
REPLACEMENT PARTS - OUTSIDE



REPLACEMENT PARTS - INSIDE



REPLACEMENT PARTS - HYDRAULICS



REPLACEMENT PARTS LIST

ITEM	DESCRIPTION	QTY	PART NUMBER
1	PLATFORM	1	LE 12900-A1
2L	PASSENGER SIDE HINGE	1	LE 12900-A10L
2R	DRIVER SIDE HINGE	1	LE 12900-A10R
3	HINGE PIN	2	LE 1328
4	HYDRAULIC CYLINDER	2	LE 12968
5	CYLINDER BASE PLATE	2	LE 2586
6	MAINTENANCE STRUT	2	LE 2822
7L	REAR PASSENGER SIDE DEBRIS GUARD	1	LE 12900-P24L
7R	REAR DRIVER SIDE DEBRIS GUARD	1	LE 12900-P24R
8	STORED POSITION FLAG (WITH HARDWARE)	1	DZ1402
9	FRONT PASSENGER SIDE DEBRIS GUARD FRONT DRIVER SIDE DEBRIS GUARD	1	LE 12994-PS LE 12994-DS
10	GROUND MOUNT DRIVER STEP	1	LE 12993-4D1
11	GRIP STRUT 14GA 1.5X9.5X120 GALVANIZED	4	GS41514
12	PHOTO EYE MOUNT PLATE	2	DZ1403
13	HYDRAULIC POWER UNIT ENCLOSURE	1	DZ1198EN
13.1	STEEL ENCLOSURE	1	PS-01978-VSM-08
13.2	12V BATTERY	1	D34M
13.3	HYDRAULIC POWER UNIT	1	DC 45324
13.4	MASTER BATTERY DISSCONNECT	1	75920
13.5	DC CIRCUIT BREAKER	1	174-S2-250-2
13.6	FLOW CONTROL VALVE	1	FR08-20A-0-N-/2.00
13.7	RELIEF VALVE 2500psi	1	LRV-080-B
13.8	CHECK VALVE	1	LCV-08-P-0.3
13.9	SOLENOID VALVE W/ MANUAL OVERRIDE	1	LSV2-08-2NCP-M
13.10	SOLENOID COIL 10VDC	1	LC2-08-C-5B
13.11	MOTOR STARTER SOLENOID 12VDC	1	391-2
13.12	ADAPTER #6 JIC MALE STRAIGHT X #6 SAE MALE	1	DZ1198HK3
13.13	ADAPTER #4 JIC MALE STRAIGHT X #6 SAE MALE	1	DZ1198HK4
13.14	HOSE, -4FJIC TO -4FJIC 90 DEGREE, 16IN LENGTH	1	DZ1198HK1
13.15	HOSE, -6FJIC TO -6FJIC 90 DEGREE, 20IN LENGTH	1	DZ1198HK2
13.16	#4 MALE JIC BULKHEAD WITH LOCK NUT	1	DZ1198HK5
13.17	#6 MALE JIC BULKHEAD WITH LOCK NUT	1	DZ1198HK6
13.18	WARNING DECAL - STORED ENERGY	1	DZ1198DC

REPLACEMENT PARTS LIST

ITEM	DESCRIPTION	QTY	PART NUMBER
14	FULL HOSE KIT (EXCLUDES POWER UNIT HOSES AND FITTINGS)	1	LE 12900-HK
14.1	HOSE HYD. #6 JIC F - #6 JIC F X 150" LONG	1	LE 12900-HK1
14.2	HOSE HYD. #6 JIC F - #6 JIC F DEG. X 63" LONG	2	LE 12900-HK2
14.3	HOSE HYD. #6 JIC F 90 DEG. - #6 JIC F 90 DEG. X 125" LONG - 0 DEG. ROT.	1	LE 12900-HK3
14.4	HOSE HYD. #4 JIC F - #4 JIC F X 150" LONG	1	LE 12900-HK4
14.5	HOSE HYD. #4 JIC F 90 DEG. - #4 JIC F 90 DEG. X 125" LONG - 0 DEG. ROT.	1	LE 12900-HK5
14.6	HOSE HYD. #4 JIC F - #4 JIC F X 35" LONG	2	LE 12900-HK6
14.7	FITTING HYD. #8 SAE O-RING M - 90° - #6 JIC F SWIVEL	2	LE 12900-HK8
14.8	FITTING HYD. #8 SAE ORB M - STRAIGHT - #6 JIC M	2	LE 12900-HK9
14.9	FITTING HYD. #8 SAE ORB M - STRAIGHT - #4 JIC M	2	LE 12900-HK10
14.10	FITTING HYD. UNION TEE #6 JIC M - #6 JIC M - #6 JIC M	2	LE 12900-HK11
14.11	FITTING HYD. UNION TEE #4 JIC M - #4 JIC M - #4 JIC M	2	LE 12900-HK12
14.12	FITTING HYD. #6 JIC F CAP	1	LE 12900-HK15
14.13	FITTING HYD. #4 JIC F CAP	1	LE 12900-HK16
14.14	FITTING HYD. #8 SAE ORB M - 90 DEG. - #6 JIC M	2	LE 12900-HK19
14.15	SOLENOID VALVE: 2-WAY, NORMALLY CLOSED	2	LE 12900-HK18L
14.16	12VDC DIN43650 W/ 6'L 4PIN M12 CORD	1	LE 12900-HK-DIN6
14.17	12VDC DIN43650 W/ 18'L 4PIN M12 CORD	1	LE 12900-HK-DIN18
14.18	SPLITTER CABLE 4-PIN; (1) 25' FLYING LEAD - (2) 1' FEMALE BRANCHES	1	CSB-UNT425M1241
15	CONTROL BOX	1	LE 12902DC
15.1	CONTROL BOX WARNING DECAL	1	DZ1198D
15.2	BATTERY CHAGER	1	LE 5900
15.3	7.5 AMP AUTOMOTIVE FUSE (UL LISTED)	1	760239
16	VAN DOOR PHOTO EYE - EMITTER & CABLE ASSEMBLY	1	LE 12902-SE
17	VAN DOOR PHOTO EYE - RECEIVER & CABLE ASSEMBLY	1	LE 12902-SR
18	OVERHEAD DOOR PROXIMITY SWITCH & CABLE ASSEMBLY	1	LE 12902-SD
19	UHR STORED PROXIMITY SWITCH & CABLE ASSEMBLY	1	LE 12902-SS
20	PHOTO EYE MOUNTING BRACKET	2	SMB18A
21	CYLINDER PINS WITH WASHER AND COTTER PINS	4	DZ1462
22	MOUNTING BRACKET FOR OVERHEAD DOOR PROXIMITY SWITCH	1	DZ1404
23	LED LIGHT 500MM LONG GREEN/RED	6	WLS15CGR0500DSQP
24	4-PIN THREADED M12 CORDSET - DOUBLE ENDED - 6' LONG	6	MQDEC-406SS
25	4-PIN THREADED M12 CORDSET - DOUBLE ENDED - 12' LONG	1	MQDEC-412SS
26	SPLITTER CABLE 4-PIN; (1) 25' MALE TRUNK - (2) 1' FEMALE BRACHES	1	CSB-M12425M1241

STANDARD WARRANTY

Dockzilla Co. warrants that its products will be free from defects in design, materials, and workmanship for a period of 365 days from the date of shipment. All claims for breach of this warranty must be made within 30 days after defect is or can, with reasonable care, be detected and in no event no more than 30 days after the warranty has expired. In order to be entitled to the benefits of this warranty, the products must have been properly installed, maintained, and operated within their rated capacities and/or specified design parameters, and not otherwise abused. Periodic lubrication and adjustment is the sole responsibility of the owner. This warranty is Dockzilla Co. exclusive warranty. DOCKZILLA CO. EXPRESSLY DISCLAIMS ALL IMPLIED WARRANTIES, INCLUDING THE IMPLIED WARRANTIES OF MECHANABILITY AND FITNESS. Non-standard warranties, if any, must be specified to Dockzilla Co. in writing.

LIMITATION OF LIABILITY

DOCKZILLA CO. SHALL NOT IN ANY EVENT BE LIABLE FOR ANY LOSS OF USE OF ANY EQUIPMENT OR INCIDENTAL OR CONSEQUENTIAL DAMAGES OF ANY KIND, WHETHER FOR BREACH OF WARRANTY, NEGLIGENCE, OR STRICT LIABILITY.



Sales & Service:

Dockzilla Co.
12400 Whitewater Dr., Suite 110
Minnetonka, MN 55343

Phone: 1-800-637-3036

Fax: 952-401-0126