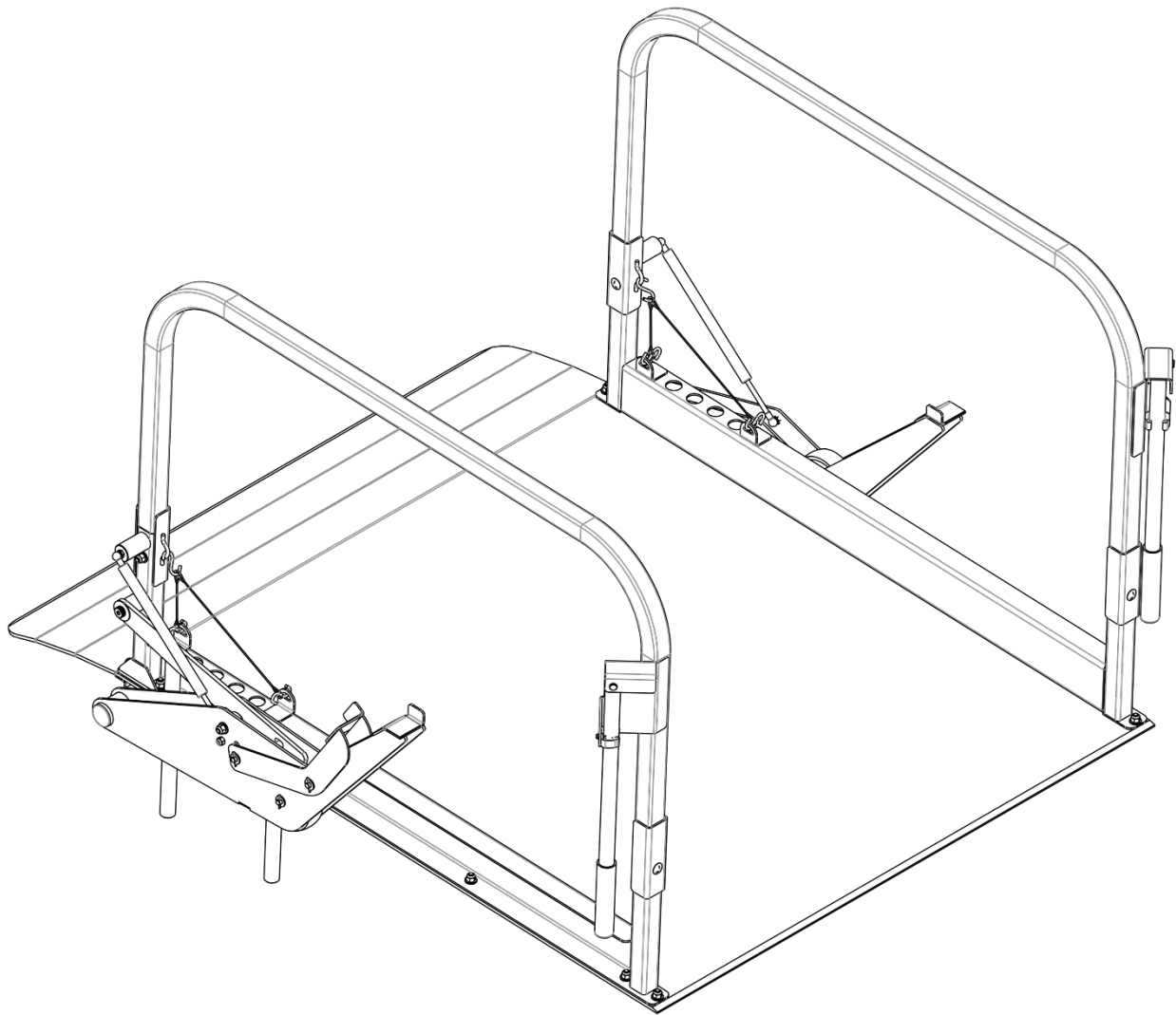




ROLLING TRUCK BOARD OWNER'S MANUAL



⚠ WARNING

Do not install, operate, or service this product unless you have read and understand the Safety Practices, Warnings, Installation and Operating Instructions contained in this User's Manual. Failure to do so could result in death or serious injury.

TABLE OF CONTENTS

| | |
|----------------------------------|----|
| INTRODUCTION | 2 |
| OWNER RESPONSIBILITY | 2 |
| SAFETY WARNING DEFINITIONS | 3 |
| PRODUCT SAFETY WARNINGS | 3 |
| FEATURES | 4 |
| OPERATION INSTRUCTION | 5 |
| MAINTENANCE | 7 |
| TROUBLESHOOTING | 7 |
| REPLACEMENT PARTS | 8 |
| STANDARD WARRANTY | 11 |

INTRODUCTION

The Rolling Truck Board is designed to provide a safer workplace for workers in shipping and receiving dock areas. The Rolling Truck Board has manually actuated wheels that allow the ramp to be repositioned easily by one person. When properly installed and operated it will provide safe and secure access between the vehicle and the dock.

WARRANTY

See Back of Owner's Manual

IMPORTANT

Read and understand contents of this manual prior to installation or operation of this equipment.

CAPACITY

The Rolling Truck Board has a **total gross load** capacity of **500 lbs. (226 kg)**, this includes the weight of any vehicle that must enter the trailer to load or unload product.

 **WARNING** *NEVER exceed rated capacity*

OWNER RESPONSIBILITY

1. The owner should recognize the inherent danger of the interface between dock and transport vehicle. The owner should, therefore, train and instruct operators in the safe use of dock equipment in accordance with the information provided below. The manufacturer shall provide to the initial purchaser, and make the following information readily available to the owner:
 - Installation instructions
 - Recommended initial and periodic inspections procedures
 - Maintenance procedures
 - Operating instructions
 - Descriptions or specifications for replaceable or repairable parts
2. It shall be the responsibility of the owner to verify that the material listed in this section has been received and that it is made available for the instruction and training of personnel entrusted with the use or maintenance of the dock equipment.
3. When a transport vehicle is parked at a loading dock, it is important that the vehicle is relatively perpendicular to the dock face and in close contact with at least one of the dock bumpers
4. Nameplates, cautions, instructions, and posted warnings shall not be obscured from the view of operating or maintenance personnel for whom such warnings are intended.
5. Manufacturer's recommended periodic maintenance and inspection procedures in effect at date of shipment shall be followed, and written records of the performance of these procedures should be kept.
6. Dock equipment that is structurally damaged shall be removed from service, inspected by a manufacturer's authorized representative, and repaired as needed before being placed back in service.
7. The manufacturer shall make available replacement nameplates, caution/instruction labels, and operating/maintenance manuals upon request of the owner. The owner shall see that all nameplates, caution/instruction markings or labels are in place and legible, and that the appropriate operating/maintenance manuals are provided to users.
8. Modifications or alterations of dock equipment shall be made only with written permission of the original manufacturer. These changes shall also satisfy all safety recommendations of the original equipment manufacturer for the particular application of the dock equipment.
9. When industrial trucks are driven on and off transport vehicles during the loading and unloading process, the brakes on the transport vehicle shall be applied and wheel chocks or a positive restraining device shall be engaged.

SAFETY WARNING DEFINITIONS

DANGER

DANGER statements indicate an imminently hazardous situation. Failure to follow the listed instructions will result in serious injury or death!

CAUTION

CAUTION statements indicate a potentially hazardous situation. Failure to follow the listed instructions may result in minor to moderate injury or property damage!

WARNING

WARNING statements indicate a potentially hazardous situation. Failure to follow the listed instructions may result in serious injury or death!

NOTICE

NOTICE statements are used to indicate procedures that must be followed to avoid equipment or property damage.

PRODUCT SAFETY WARNINGS

WARNING

Before starting installation or maintenance, check and follow the safety procedures of the facility where the mobile van ramp is being installed.

NEVER enter a vehicle until its brakes are set, and you have visually inspected to be sure truck/trailer is securely held in place by a vehicle restraint or wheel chock per OSHA regulations.

If a malfunction does occur, always call your authorized Dockzilla Co. service representative immediately.

NEVER exceeded rated capacity.

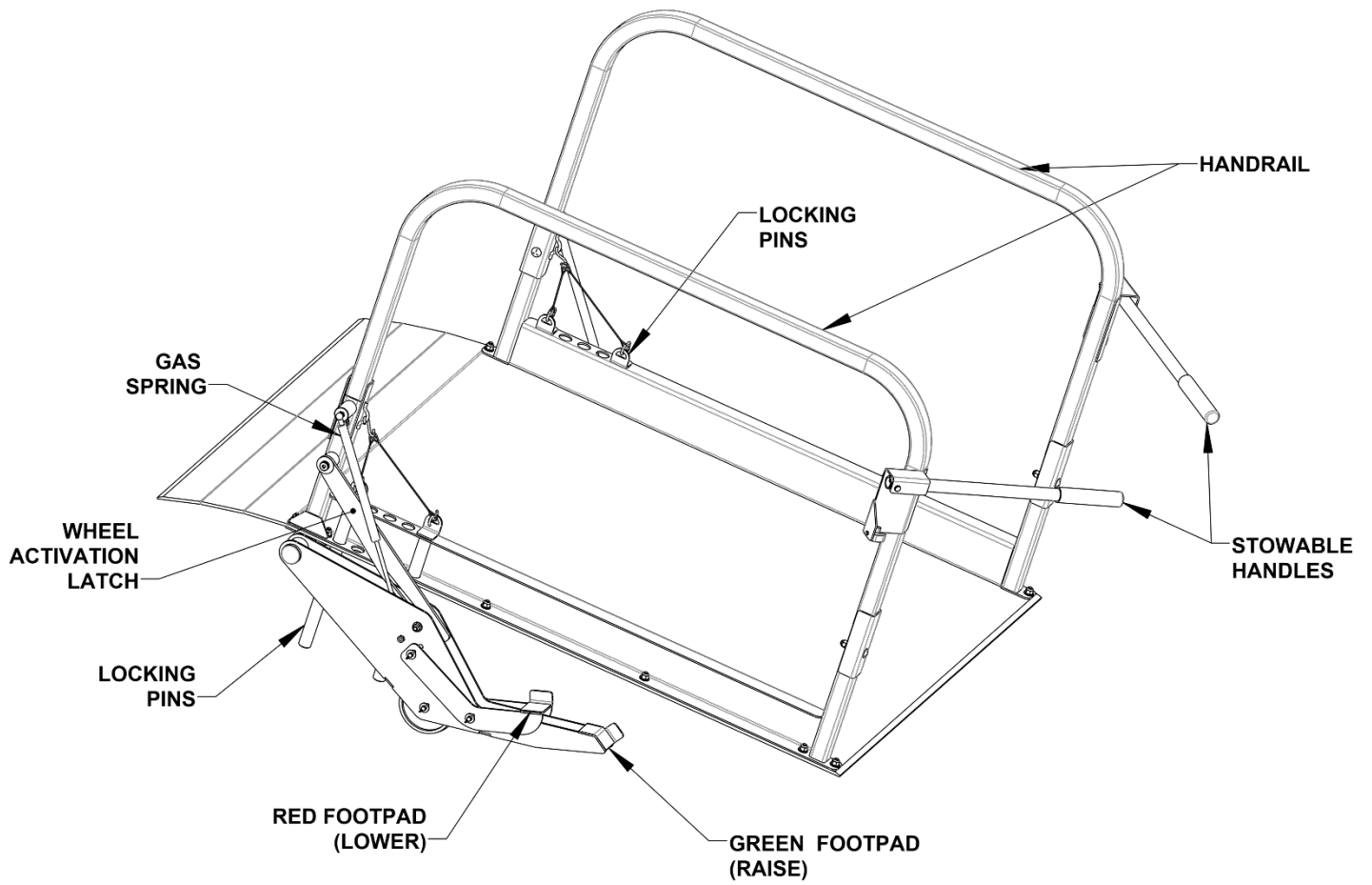
If equipment is damaged or malfunctioning, clearly mark or barricade the area to prevent use until repairs can be made.

NEVER walk on ramp unless the lip is resting on the bed of a vehicle and locking pins are in place.

CAUTION

Inspect quarterly to ensure that there are no broken or worn parts which could cause injury to personnel or damage to the equipment.

FEATURES



OPERATION INSTRUCTION

WARNING NEVER walk on ramp while it is in the raised position.

NEVER walk on ramp unless the lip is resting on the bed of a vehicle and locking pins are in place.

1. Engage wheels by pressing down on the GREEN footpad until the lip of the truck board is raised off the ground and the wheels are locked (see Figure 1).

NOTICE DO NOT raise lip with any load on the ramp.

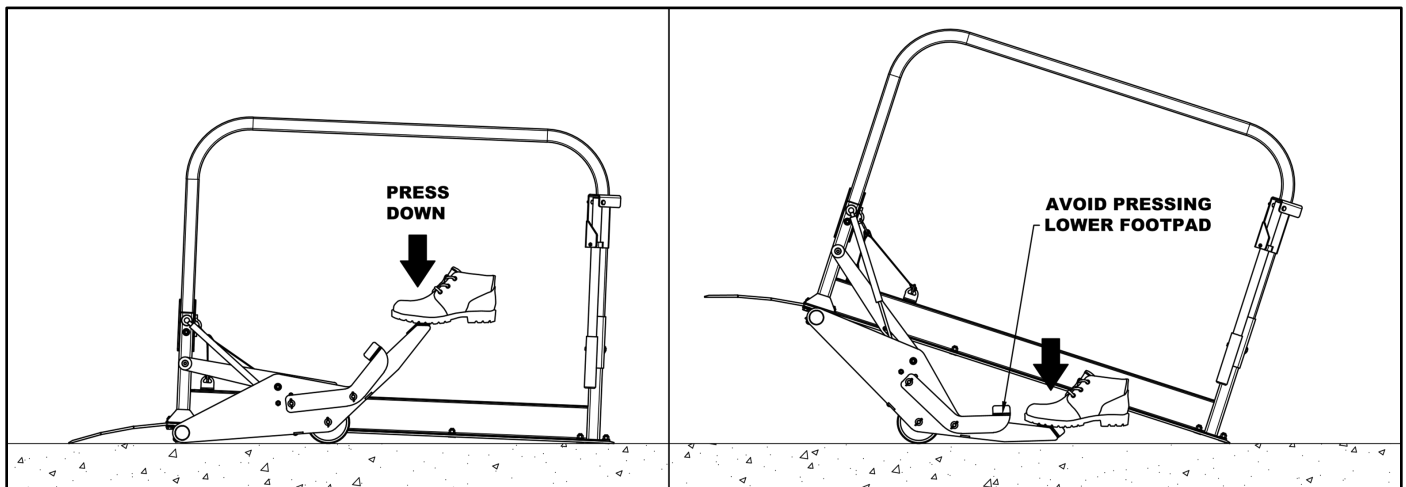


Figure 1

2. With truck board raised and wheels locked, pull the handles out from their stowed position and lift the truck board until the back of the ramp is a few inches off the ground (see Figure 2).
3. Using the handles, roll the truck board into position behind the vehicle so that the lip is sitting above the vehicle's cargo area (see Figure 2).

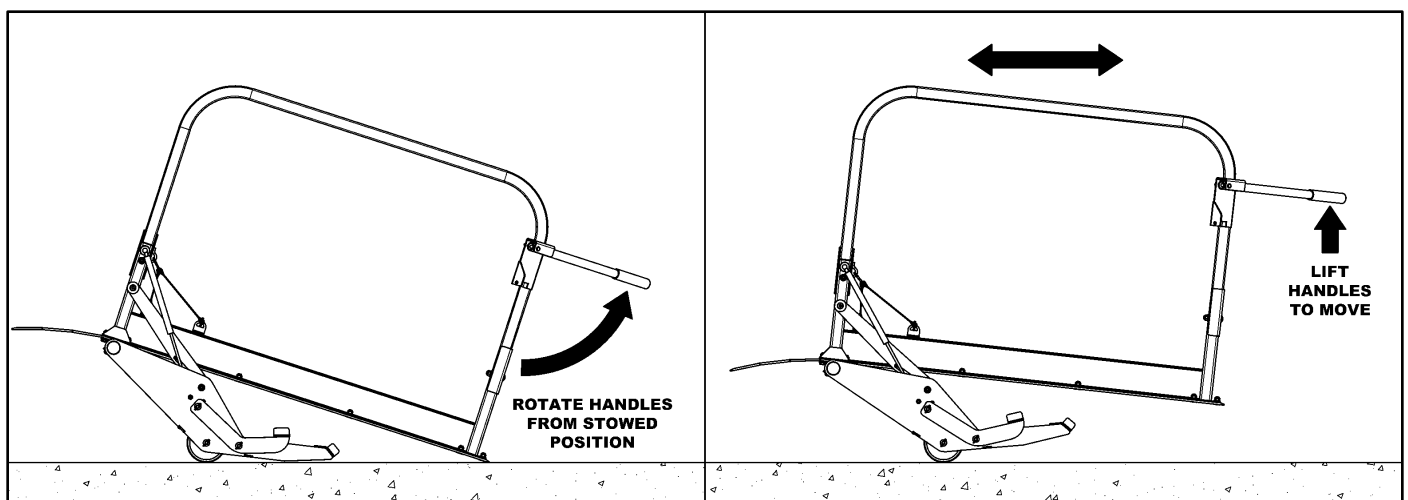


Figure 2

4. Begin to lower the lip into the vehicle by pressing on the RED footpad to disengage the locking link. Slowly lift your foot from the footpad to allow the lip gently fall into the vehicle (see Figure 3).

WARNING NEVER enter a vehicle until its brakes are set, and you have visually inspected vehicle to ensure vehicle is securely held in place by a vehicle restraint or wheel chocks per OSHA regulations.

OPERATION INSTRUCTIONS (CONT.)

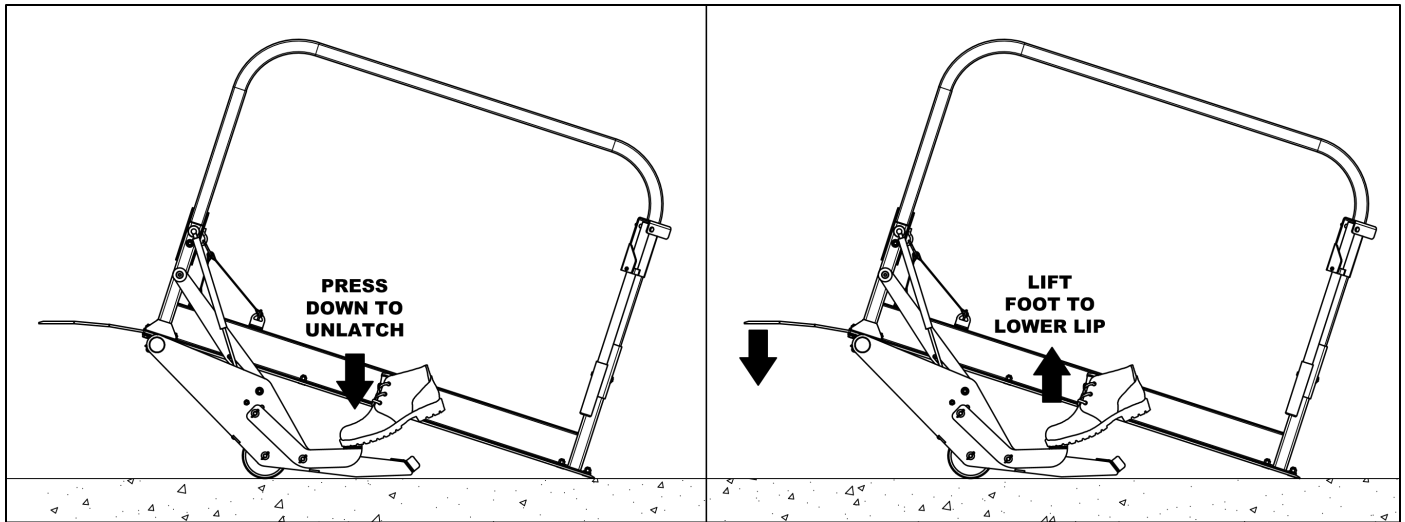


Figure 3

5. Ensure that the locking pins are positioned in the gap between the vehicle and the loading dock. You may need to re-position the locking pins by pulling them out and dropping them into one of the available positions (see Figure 4).

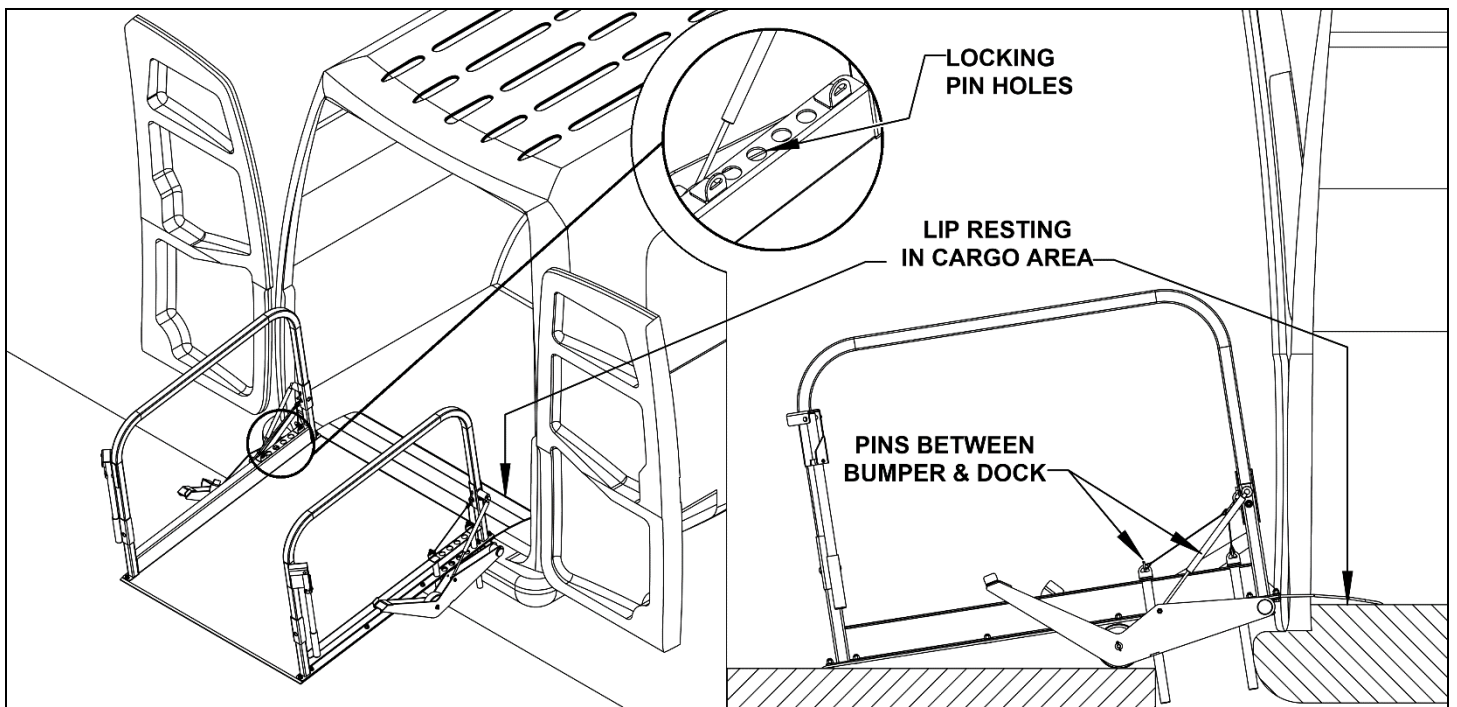


Figure 4

6. Ramp may now be used for loading/unloading.
7. Once loading/unloading is complete, return the truck board to its designated storage area by repeating steps 1-2. Store the truck board in the lowered position by pressing on the red footpad.

CAUTION Ramp SHOULD be stored in the lowered position to minimize risk of potential injury.

MAINTENANCE

NOTICE

Maintenance may be required more frequently at loading docks exposed to harsh environments (extreme climates, corrosive chemicals, frequency of usage exceeding 8 vehicles per day, etc.). Consult Dockzilla Co. if these conditions exist for accelerated maintenance requirements.

DAILY

1. During normal operation, inspect and report any damaged parts or erratic operation. If there are any broken or worn parts repair as needed.

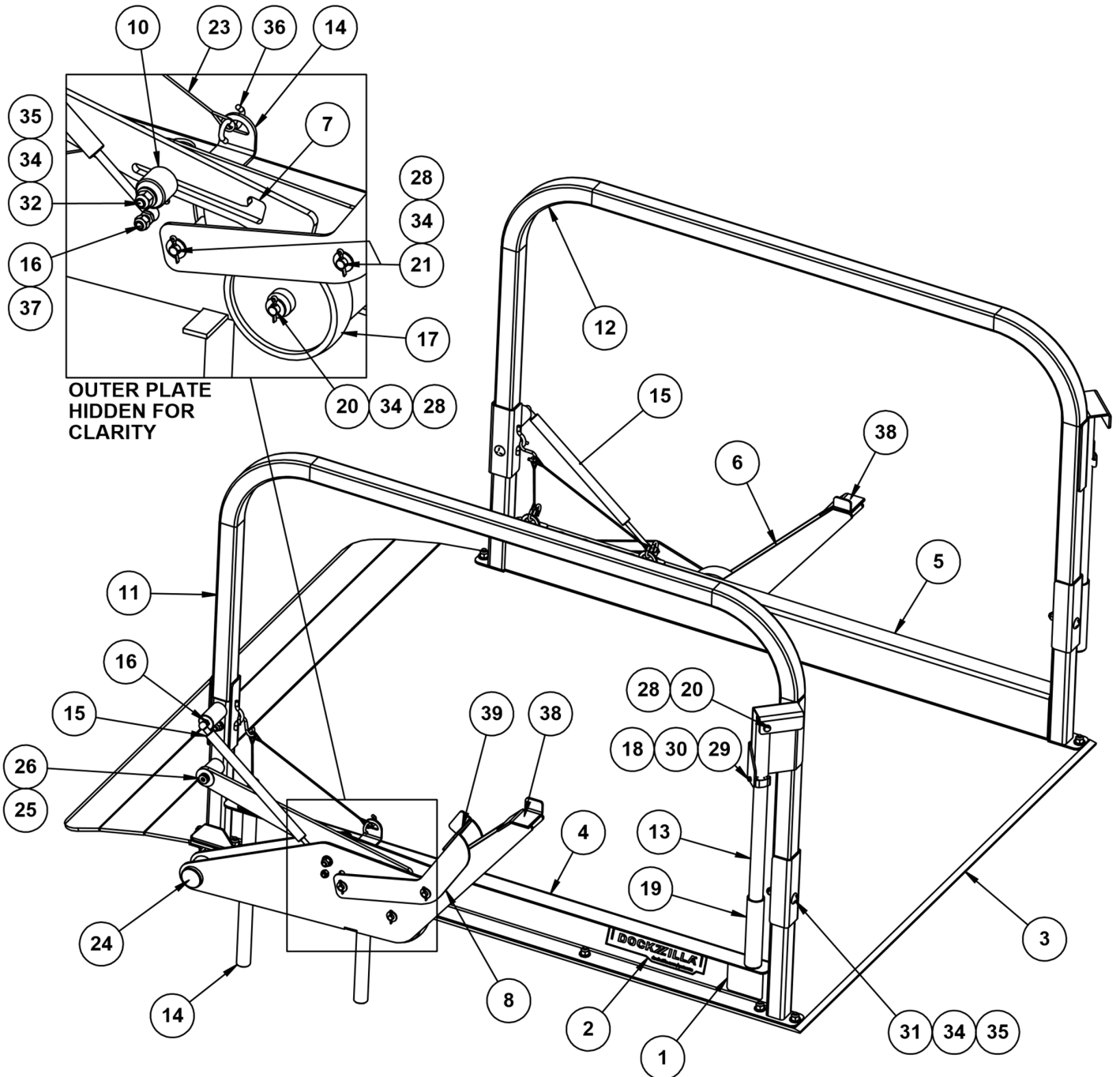
QUARTERLY

1. Perform all Daily Maintenance.
2. Inspect unit for any structural damage.
3. Check the wheels for excessive damage.
4. Re-torque any loose bolts.

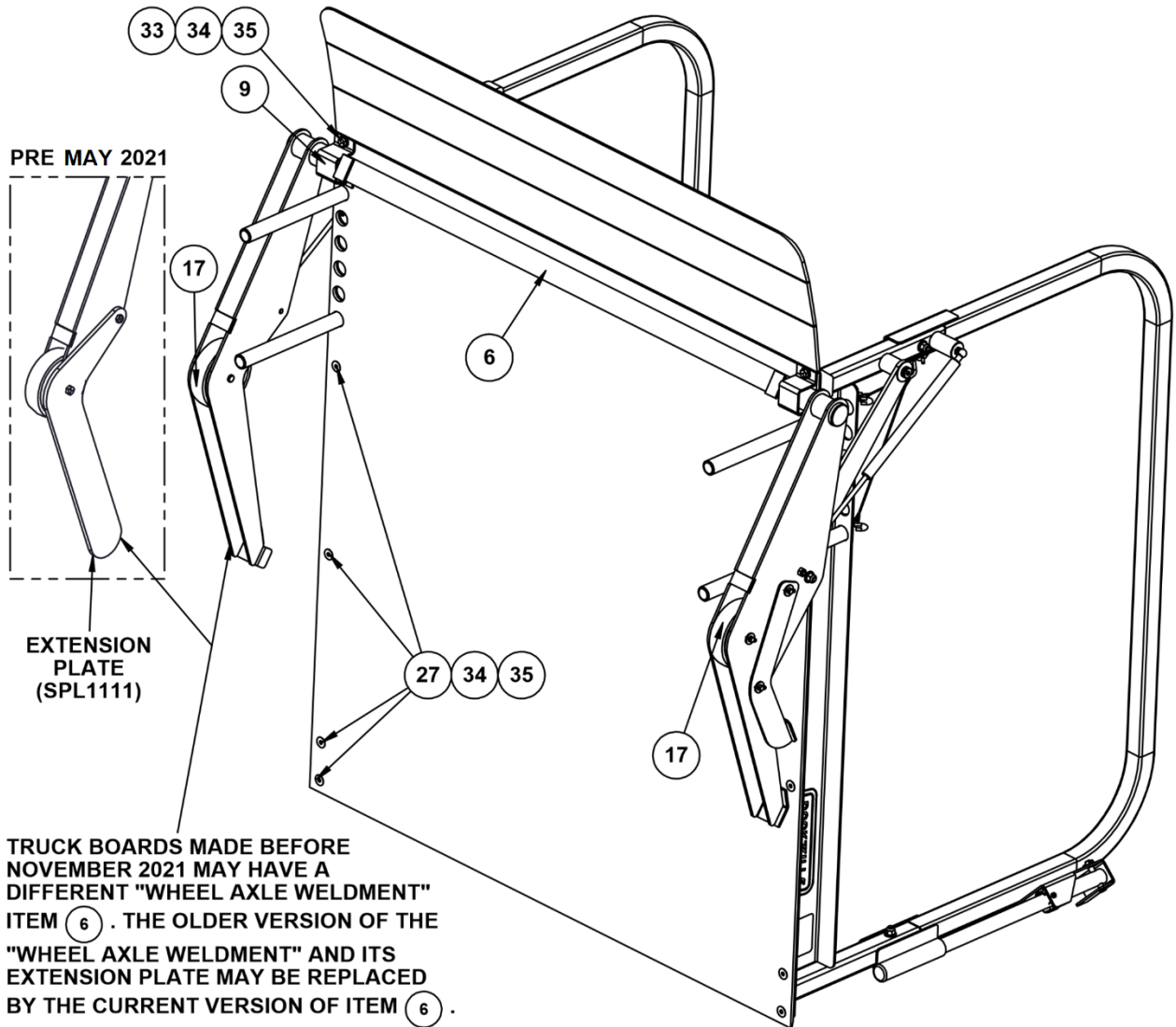
TROUBLESHOOTING

| Symptom | Probable Causes | Remedy |
|--|--------------------------------------|---|
| Difficult to raise or lower wheels | Wheel axle weldment binding | Clean any buildup or debris, check for excessive wear, and bent or broken parts. Replace as needed. |
| | Malfunction in wheel activation link | Check area for foreign objects and check for excessive wear, and bent or broken parts. Replace as needed. |
| | Gas spring is worn out | Replace gas spring. |
| | Wheel damaged | Replace wheel. |
| Product does not roll, or rolling is difficult | Debris around wheel | Perform maintenance. |
| | Wheel damaged | Replace wheel. |
| Ramp locked in "UP" position. | Malfunction in wheel activation link | Check area for foreign objects and check for excessive wear, and bent or broken parts. Replace as needed. |

REPLACEMENT PARTS



REPLACEMENT PARTS (CONT.)



REPLACEMENT PARTS (CONT.)

| ITEM | DESCRIPTION | QTY. | PART NUMBER |
|------|---|------|----------------------------------|
| 1 | DOCKZILLA SERIAL TAG | 2 | LE 1234 |
| 2 | DOCKZILLA PATENT DECAL (2.5" X 8.55") | 2 | SPL1084 |
| 3 | PLATE DIAMOND .25 X 47.75 X 63.63 BEND | 1 | DZ1382-47.75 |
| 4 | RTB CURB WELDMENT (LEFT) | 1 | DZ1383-L |
| 5 | RTB RIGHT CURB WELDMENT | 1 | DZ1383-R |
| 6 | WHEEL AXLE WELDMENT (SEE NOTE ON PAGE 9 IF UNIT WAS BUILT BEFORE NOV. 2021) | 1 | DZ1388-54 |
| 7 | ACTIVATION LINK ACTIVATION LINK - IF UNIT HAS SPL1111 NOTE ON PAGE 9 (PRE 05-21) | 1 | DZ1463 DZ1396 (PRE MAY. 2021) |
| 8 | RELEASE LEVER WELDMENT | 1 | DZ1393 |
| 9 | WHEEL AXLE MOUNTING BRACKET | 2 | DZ1426 |
| 10 | SPACER FOR ACTIVATION LINK | 1 | DZ1397 |
| 11 | RTB HANDRAIL WELDMENT (LEFT) | 1 | DZ1420-L |
| 12 | RTB HANDRAIL WELDMENT (RIGHT) | 1 | DZ1420-R |
| 13 | HANDLE PIPE - 22"L | 2 | DZ1437 |
| 14 | RTB PIN WELDMENT | 4 | DZ1424 |
| 15 | GAS SPRING 75lb - 20" EXTENDED | 2 | 8AU203468JJ0334 |
| 16 | BALL STUD, 10MM BALL - 5/16-18 THREAD ZP | 4 | HS-101 |
| 17 | RUBBER WHEEL Ø5" - Ø.38 AXLE X 1.5"L HUB | 2 | 2337T26 |
| 18 | TOOL HOLDER Ø1"-1.5" ZINC PLATED | 2 | 1723A240 |
| 19 | HANDLE GRIP | 2 | 9282K28 |
| 20 | CLEVIS PIN HEADED Ø0.38 X 2.25L (2.00 USABLE) ZP | 4 | 97245A349 |
| 21 | CLEVIS PIN HEADED Ø0.38 X 2.63L (2.38 USABLE) ZP | 2 | 97245A361 |
| 22 | CABLE LANYARD Ø3/32 X 12"L COATED | 4 | 90312A278 |
| 24 | SNAP IN ROUND PLUG Ø1.63OD | 2 | 9283K350 |
| 25 | WASHER Ø0.406ID X 1.50OD X 0.51T ZP STEEL | 1 | 91090A114 |
| 26 | SHOULDER BOLT Ø0.50 X 0.38L .38-16 THREAD | 1 | 91259A705 |
| 27 | FLADHEAD CAP SCREW Ø0.38-16 X 1"L ZP | 8 | 91263A584 |
| 28 | COTTER PIN .13Ø X 0.75L ZINC PLATED | 6 | |
| 29 | PAN HEAD SCREW #6-32 UNC X 0.38L ZP | 2 | |
| 30 | NUT, NYLOCK 6-32 UNC ZINC PLATED | 2 | |
| 31 | CARRIAGE BOLT 0.38-16 X 2.25L ZP1 | 4 | |
| 32 | BOLT HEX HEAD 0.38-16 X 2.50L ZP | 1 | |
| 33 | BOLT HEX HEAD 0.38-16 X 1.25L ZP | 4 | |
| 34 | WASHER FLAT SAE 0.38 ZINC PLATED | 27 | |
| 35 | NUT, NYLOCK 0.38-16 UNC ZINC PLATED | 17 | |
| 36 | S-HOOK Ø.19 X 1.50L ZINC PLATED | 6 | |
| 37 | NUT, NYLOCK 0.31-18 UNC ZINC PLATED | 2 | |
| 38 | GREEN GRIP TAPE 2.00 X 3.00 | 2 | |
| 39 | RED GRIP TAPE 2.00 X 2.00 | 1 | |

STANDARD WARRANTY

Dockzilla Co. warrants that its products will be free from defects in design, materials, and workmanship for a period of 365 days from the date of shipment. All claims for breach of this warranty must be made within 30 days after defect is or can, with reasonable care, be detected and in no event no more than 30 days after the warranty has expired. In order to be entitled to the benefits of this warranty, the products must have been properly installed, maintained, and operated within their rated capacities and/or specified design parameters, and not otherwise abused. Periodic lubrication and adjustment is the sole responsibility of the owner. This warranty is Dockzilla Co. exclusive warranty. DOCKZILLA CO. EXPRESSLY DISCLAIMS ALL IMPLIED WARRANTIES, INCLUDING THE IMPLIED WARRANTIES OF MERCHANTABILITY AND FITNESS. Non-standard warranties, if any, must be specified to Dockzilla Co. in writing.

LIMITATION OF LIABILITY

DOCKZILLA CO. SHALL NOT IN ANY EVENT BE LIABLE FOR ANY LOSS OF USE OF ANY EQUIPMENT OR INCIDENTAL OR CONSEQUENTIAL DAMAGES OF ANY KIND, WHETHER FOR BREACH OF WARRANTY, NEGLIGENCE, OR STRICT LIABILITY.



Sales & Service:

Dockzilla Co.
12400 Whitewater Dr., Suite 110
Minnetonka, MN 55343

Phone: 1-800-637-3036

Fax: 952-401-0126