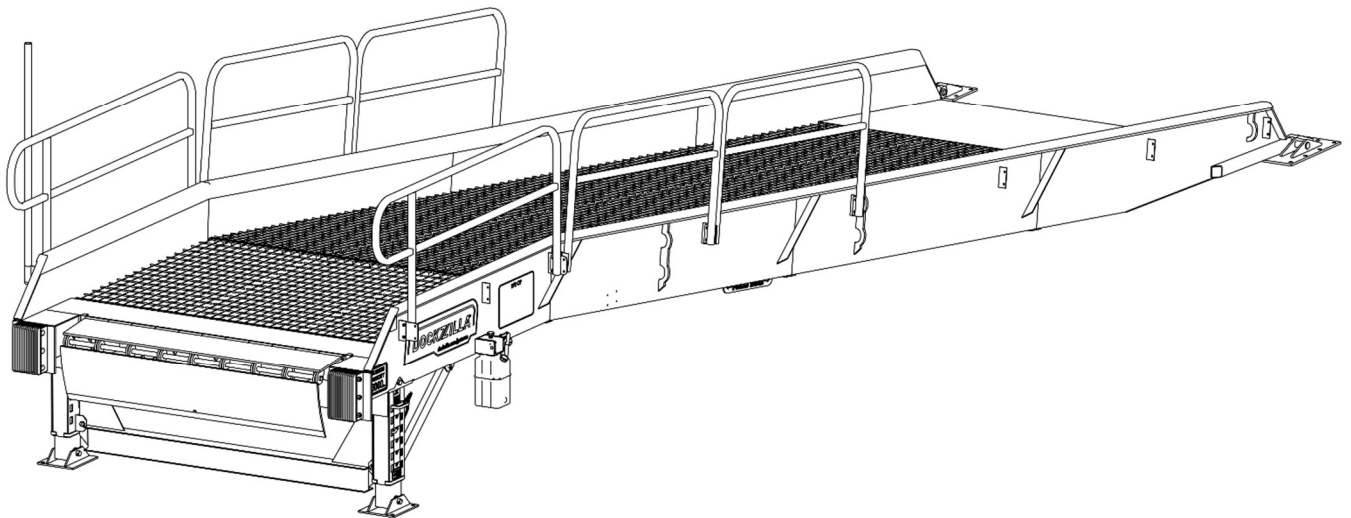




# ADJUSTABLE LOADING DOCK OWNER'S MANUAL



This manual applies to Adjustable Loading Docks manufactured beginning March 2021 with the serial numbers 21-8027001 and higher.

**⚠ WARNING**

***Do not install, operate or service this product unless you have read and understand the Safety Practices, Warnings, Installation and Operating Instructions contained in this User's Manual. Failure to do so could result in death or serious injury.***

# TABLE OF CONTENTS

INTRODUCTION..... 2

OWNER RESPONSIBILITY ..... 3

SAFETY WARNING DEFINITIONS ..... 3

PRODUCT SAFETY WARNINGS ..... 4

FEATURES..... 4

SETUP ..... 5

OPERATION INSTRUCTION ..... 9

    ADJUSTING THE HEIGHT ..... 9

    LOADING AND UNLOADING ..... 10

    DOCK LEVELER OPERATION ..... 11

MAINTENANCE..... 12

TROUBLESHOOTING..... 13

REPLACEMENT PARTS ..... 13

    HYDRAULIC POWER UNIT (OPTION) ..... 15

HYDRAULICS..... 16

STANDARD WARRANTY..... 19

# INTRODUCTION

The Adjustable Loading Dock is designed to provide a safe work place for workers in shipping and receiving dock areas. This loading dock is designed to be impactable, with a high-strength steel frame and bolt-down base plates. With its manually adjustable legs, the dock height can adapt to service most vehicles. When properly installed and operated it will provide safe and secure access between the ground and a vehicle.

## WARRANTY

See Back of Owner’s Manual.

## IMPORTANT

Read and understand contents of this manual prior to installation or operation of this equipment.

## CAPACITY

Model	Length	Width	Capacity	Ramp Weight
DFE3809616H	38 ft.	96 in.	16,000 lbs. (7,250 kg)	8,950 lbs. (4060 kg)
DFE3809616D	38 ft.	96 in.	16,000 lbs. (7,250 kg)	9,100 lbs. (4128 kg)
DFE3809622H	38 ft.	96 in.	22,000 lbs. (10,000 kg)	9,850 lbs. (4468 kg)
DFE3809622D	38 ft.	96 in.	22,000 lbs. (10,000 kg)	10,000 lbs. (4536 kg)
DFE3809632H	38 ft.	96 in.	32,000 lbs. (14,500 kg)	12,350 lbs. (5602 kg)
DFE3809632D	38 ft.	96 in.	32,000 lbs. (14,500 kg)	12,500 lbs. (5670 kg)
DFE3811416H	38 ft.	114 in.	16,000 lbs. (7,250 kg)	10,200 lbs. (4627 kg)
DFE3811416D	38 ft.	114 in.	16,000 lbs. (7,250 kg)	10,350 lbs. (4695 kg)
DFE3811422H	38 ft.	114 in.	22,000 lbs. (10,000 kg)	10,600 lbs. (4808 kg)
DFE3811422D	38 ft.	114 in.	22,000 lbs. (10,000 kg)	10,750 lbs. (4876 kg)
DFE3811432H	38 ft.	114 in.	32,000 lbs. (14,500 kg)	14,050 lbs. (6373 kg)
DFE3811432D	38 ft.	114 in.	32,000 lbs. (14,500 kg)	14,200 lbs. (6441 kg)



**WARNING**  
**NEVER exceed rated capacity**

## OWNER RESPONSIBILITY

1. The owner should recognize the inherent danger of the interface between dock and transport vehicle. The owner should, therefore, train and instruct operators in the safe use of dock equipment in accordance with the information provided below. The manufacturer shall provide to the initial purchaser, and make the following information readily available to the owner:
  - Installation instructions
  - Recommended initial and periodic inspections procedures.
  - Maintenance procedures
  - Operating instructions
  - Descriptions or specifications for replaceable or repairable parts
2. It shall be the responsibility of the owner to verify that the material listed in this section has been received and that it is made available for the instruction and training of personnel entrusted with the use or maintenance of the dock equipment.
3. When a transport vehicle is parked at a loading dock, it is important that the vehicle is relatively perpendicular to the dock face and in close contact with at least one of the dock bumpers
4. Nameplates, cautions, instructions, and posted warnings shall not be obscured from the view of operating or maintenance personnel for whom such warnings are intended.
5. Manufacturer's recommended periodic maintenance and inspection procedures in effect at date of shipment shall be followed, and written records of the performance of these procedures should be kept.
6. Dock equipment that is structurally damaged shall be removed from service, inspected by a manufacturer's authorized representative, and repaired as needed before being placed back in service.
7. The manufacturer shall make available replacement nameplates, caution/instruction labels, and operating/maintenance manuals upon request of the owner. The owner shall see that all nameplates, caution/instruction markings or labels are in place and legible, and that the appropriate operating/maintenance manuals are provided to users.
8. Modifications or alterations of dock equipment shall be made only with written permission of the original manufacturer. These changes shall also satisfy all safety recommendations of the original equipment manufacturer for the particular application of the dock equipment.
9. When industrial trucks are driven on and off transport vehicles during the loading and unloading process, the brakes on the transport vehicle shall be applied and wheel chocks or a positive restraining device shall be engaged.

## SAFETY WARNING DEFINITIONS

### **DANGER**

***DANGER statements indicate an imminently hazardous situation. Failure to follow the listed instructions will result in serious injury or death!***

### **CAUTION**

***CAUTION statements indicate a potentially hazardous situation. Failure to follow the listed instructions may result in minor to moderate injury or property damage!***

### **WARNING**

***WARNING statements indicate a potentially hazardous situation. Failure to follow the listed instructions may result in serious injury or death!***

### **NOTICE**

***NOTICE statements are used to indicate procedures that must be followed to avoid equipment or property damage.***

# PRODUCT SAFETY WARNINGS

**⚠ DANGER**

**ALWAYS** communicate with the transport vehicle driver to ensure an understanding of the loading or unloading procedure.

**⚠ CAUTION**

Follow the maintenance schedule to ensure that there are no broken parts that might cause injury to workers or damage to the equipment.

**⚠ WARNING**

**NEVER** perform maintenance without barricading the work area to warn that work is being done.

**NEVER** exceed the rated load capacity.

If a malfunction occurs contact Dockzilla Co. or local representative and discontinue use of ramp until the issue has been resolved.

# FEATURES

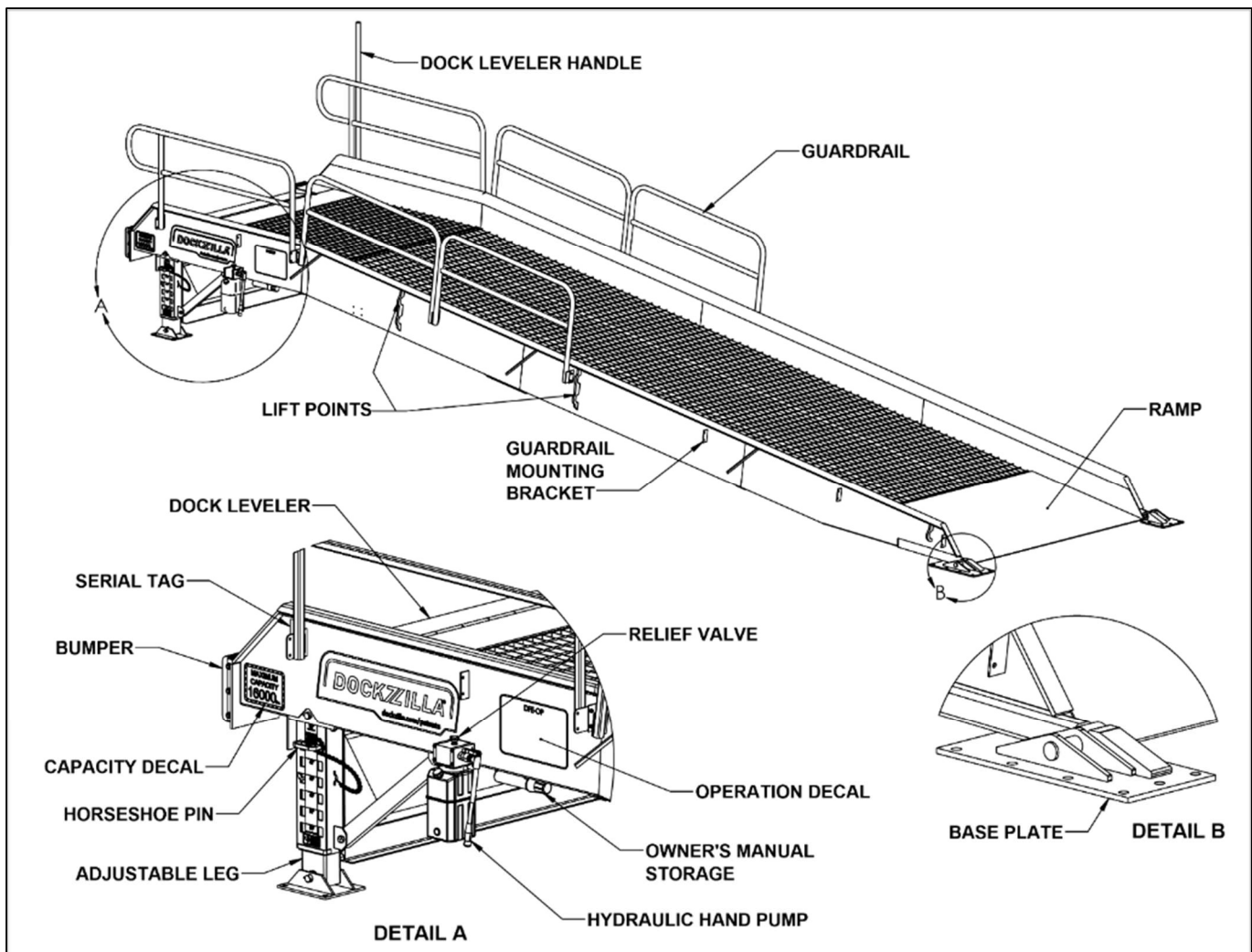


Figure 1: Adjustable Loading Dock Features

# SETUP

## TOOLS REQUIRED

- Crane, Telescopic Handler, or two forklifts
- Rotary Hammer and 3/4" concrete bit (minimum 8" long)
- 7/16", 9/16", 1-1/8" wrenches or wrench and socket

## OFFLOADING PROCEDURE

Note: Read complete installation instructions before offloading the ramp.

1. If possible, drive and park truck/trailer near the final location of the ramp.
2. Inspect all equipment for any freight damage and verify all components have arrived.
3. Remove all chains and straps that are securing the loading dock to the trailer.
4. Remove pallets and any other items off of the loading dock.
5. Lift the Adjustable Loading Dock from the trailer using one of the following methods:



**NEVER exceed the rated capacity of lifting equipment.**

**NEVER lift loading dock with any objects sitting on the ramp or platform.**

Model	Length	Width	Capacity	Ramp Weight
DFE3809616H	38 ft.	96 in.	16,000 lbs. (7,250 kg)	8,950 lbs. (4060 kg)
DFE3809616D	38 ft.	96 in.	16,000 lbs. (7,250 kg)	9,100 lbs. (4128 kg)
DFE3809622H	38 ft.	96 in.	22,000 lbs. (10,000 kg)	9,850 lbs. (4468 kg)
DFE3809622D	38 ft.	96 in.	22,000 lbs. (10,000 kg)	10,000 lbs. (4536 kg)
DFE3809632H	38 ft.	96 in.	32,000 lbs. (14,500 kg)	12,350 lbs. (5602 kg)
DFE3809632D	38 ft.	96 in.	32,000 lbs. (14,500 kg)	12,500 lbs. (5670 kg)
DFE3811416H	38 ft.	114 in.	16,000 lbs. (7,250 kg)	10,200 lbs. (4627 kg)
DFE3811416D	38 ft.	114 in.	16,000 lbs. (7,250 kg)	10,350 lbs. (4695 kg)
DFE3811422H	38 ft.	114 in.	22,000 lbs. (10,000 kg)	10,600 lbs. (4808 kg)
DFE3811422D	38 ft.	114 in.	22,000 lbs. (10,000 kg)	10,750 lbs. (4876 kg)
DFE3811432H	38 ft.	114 in.	32,000 lbs. (14,500 kg)	14,050 lbs. (6373 kg)
DFE3811432D	38 ft.	114 in.	32,000 lbs. (14,500 kg)	14,200 lbs. (6441 kg)

- a. **CRANE (PREFERRED):** Attach chains on the four lift points located on the sides of the loading dock (Figure 2a). Slowly lift the loading dock from the trailer, move it to the desired location, and carefully place it on the ground.

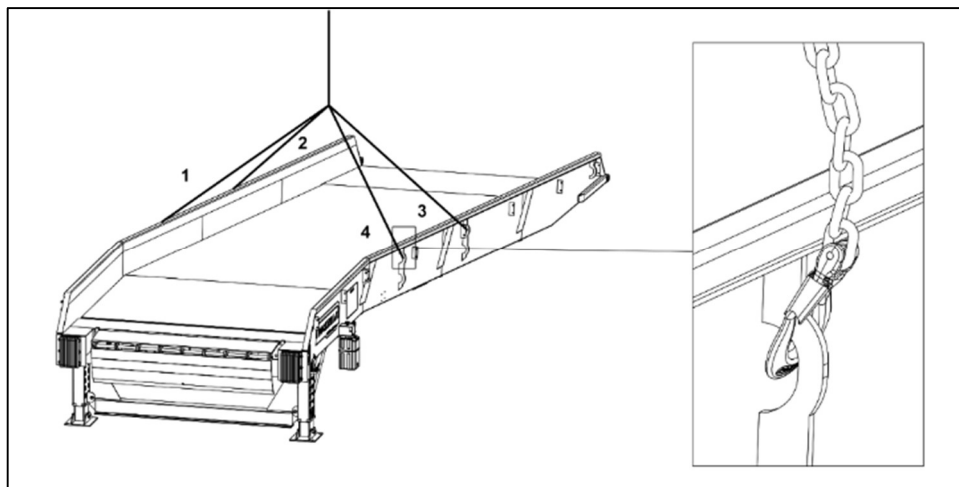


Figure 2a: Offloading with a Crane

- b. **TELESCOPIC HANDLER:** Fully insert forks on either side of “FORKS HERE” tab so that the full width of the ramp is fully supported, **10’ forks required**. Slowly lift ramp and verify that the load is stable. Carefully move ramp to desired location and place it on the ground.

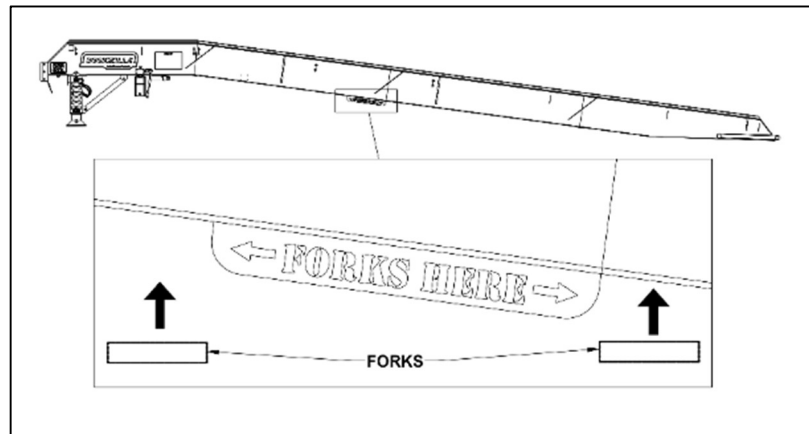


Figure 2b: Offloading with a Telehandler

**WARNING** Forks **MUST** be 10’ long. Properly rated fork extensions are acceptable.

- c. **TWO FORKLIFTS:** Position a forklift on either side of the loading dock. Fully insert forks on either side of the “FORKS HERE” tab so that the full width of the ramp is fully supported. Simultaneously lift the ramp just high enough so there is no contact with the trailer and verify the stability of the load. Once the ramp is no longer in contact with the trailer, drive the trailer forward until there is enough space to lower the ramp to the ground. To move the loading dock into its final position after it has been removed from the trailer, lift the dock from the front and rear of the ramp. To do this, one forklift must lift underneath the front cross beam, and the other forklift must lift the rear using the lifting loops and a chain (see Figure 3). **DO NOT** lift the rear of the loading dock beneath the base ramp, this will cause damage to the ramp.

**WARNING** **DO NOT** attempt to move forklifts in any direction while unloading the ramp from the trailer with two forklifts. Only raise and lower forks while handling the ramp in this manner.

**There MUST** be clear communication between the forklift operators and the transport vehicle driver at all times.

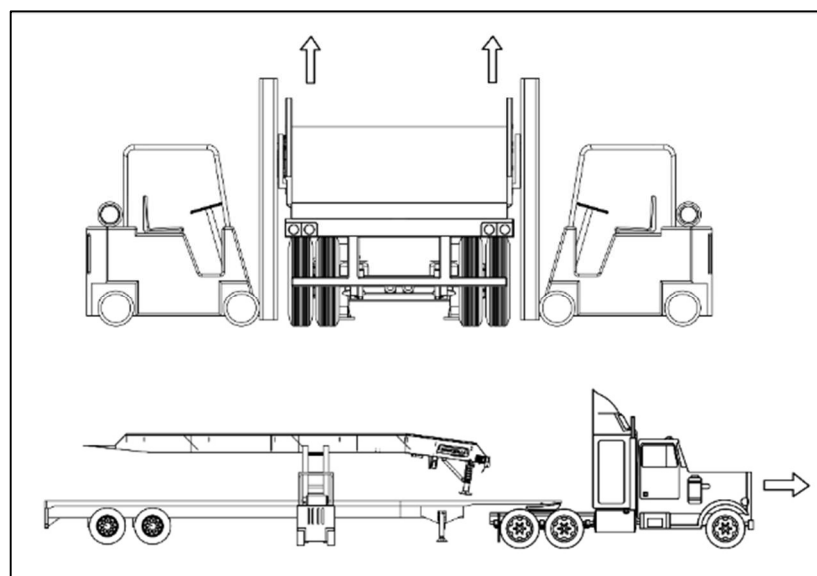


Figure 2c: Offloading with two forklifts

## MOVING THE RAMP

1. Position a forklift at the front and rear ends of the ramp as shown in Figure 3.
2. Place forks underneath the cross beam between the adjustable legs to lift the front of the ramp.
3. Use a chain hooked to the lifting loops on either side of the ramp to lift the rear end of the ramp.
  - a. Chain should be approximately 2' longer than the width of the ramp.
  - b. NEVER lift from underneath the edge of the base ramp.
4. Simultaneously lift the ramp and slowly move it to the desired location.



**DO NOT lift ramp from beneath the base ramp. A chain must be used to move the loading dock.**

**There MUST be clear communication between the forklift operators at all times.**

**Ensure the area is clear of personnel before moving the loading dock.**

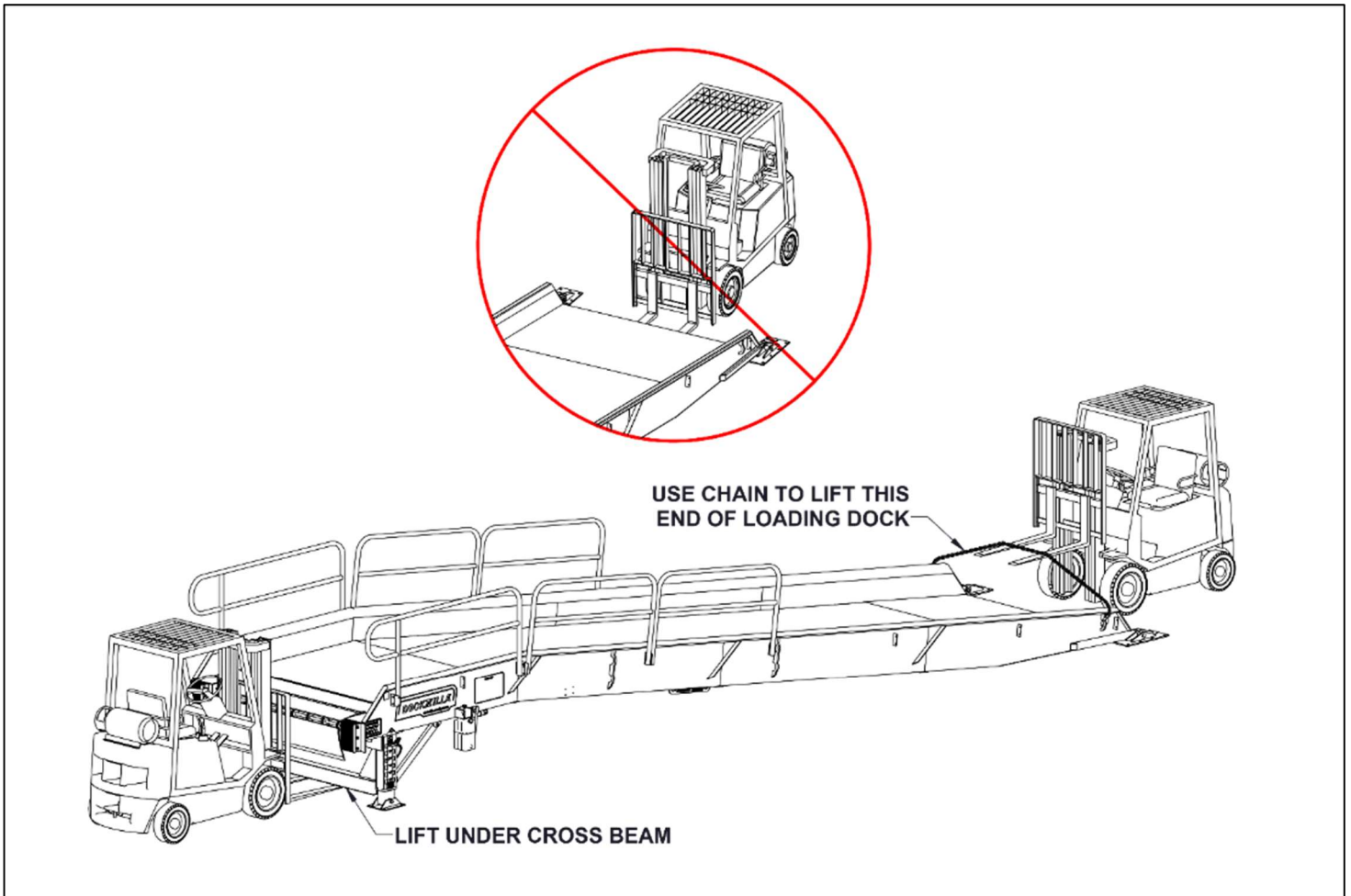


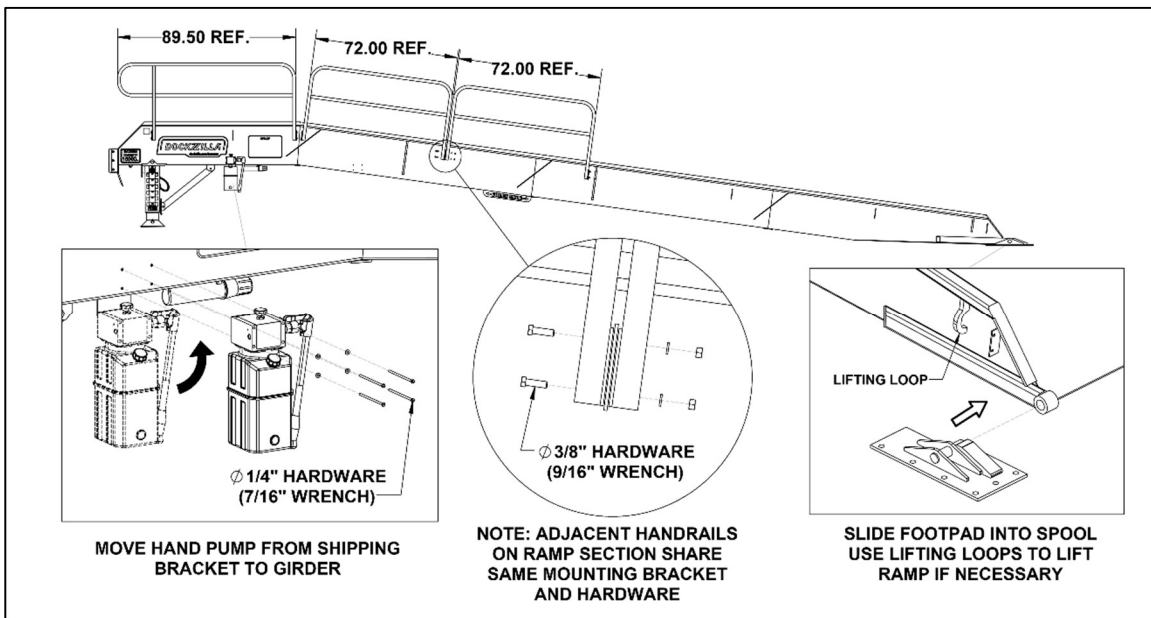
Figure 3. Moving the Loading Dock



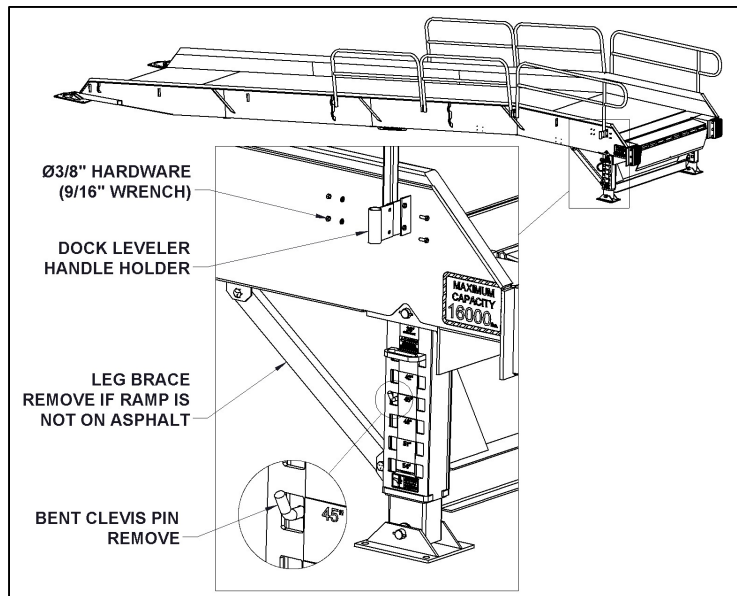
**INSTALLATION**

1. Install footpads by sliding them into the spools at the base of the ramp before setting the ramp on the ground.
  - a. If the ramp is already on the ground, use the lifting loops near the base to lift the ramp and slide the footpads on. DO NOT lift from beneath the base ramp.
2. Once the loading dock set on the ground in the desired location, anchor footpads using  $\text{Ø}3/4"$  x 6" anchor screws.
3. Remove bent clevis pin from legs and discard (see Figure 4b). This pin is for shipping purposes only.
4. Adjust legs to the desired height (see "Adjusting the Height") and anchor the leg base plates to the ground using  $\text{Ø}3/4"$  x 6" anchor screws.
5. Remove the hand pump from the shipping bracket. Mount pump to the girder using provided  $1/4"$  hardware (7/16" wrench). Discard shipping bracket.
6. Remove leg brace channels from both sides of ramp.
 

**Note:** If unit is being installed on asphalt, skip Step 6.
7. Install all handrails and the dock leveler handle holder using the provided  $3/8"$  hardware (9/16" wrench). Adjacent handrails will share the same hardware.



**Figure 4a. Installing the loading dock**



**Figure 4b. Installing the loading dock (continued)**

# OPERATION INSTRUCTION

## ADJUSTING THE HEIGHT

1. Close the pump relief valve by turning knob clockwise (see Figure 5).
2. Pump the handle until the pins can be removed or the ramp is a few inches above the desired height (Figure 6).
3. Relocate the horseshoe pins on both sides of the loading dock to set the desired height.

**NOTICE** *The legs on both sides of the ramp MUST be at the same height.*

- a. If a 36" dock height is desired the horseshoe pins must be left out (Figure 7).

**WARNING** *DO NOT cross under the trailer or ramp.*

4. Visually inspect the horseshoe pins to verify that they are inserted completely (see Figure 8).
5. **SLOWLY** open the relief valve by turning the knob counter-clockwise to lower the ramp onto the horseshoe pins. **FULLY** open the valve and leave it open until the loading dock needs to be adjusted again.

**NOTICE** *The relief valve MUST be left open while the ramp is in use. Close only to adjust the height of the loading dock. Failure to do so may result in damage to the loading dock.*

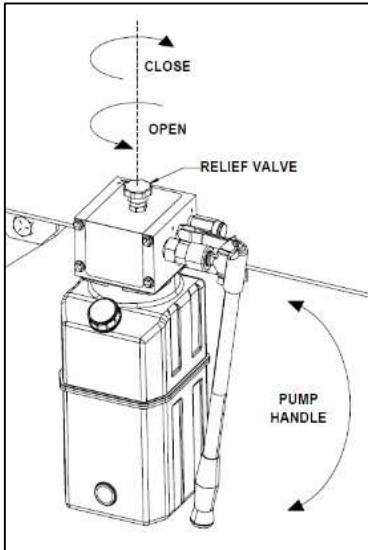


Figure 5. Pump Detail

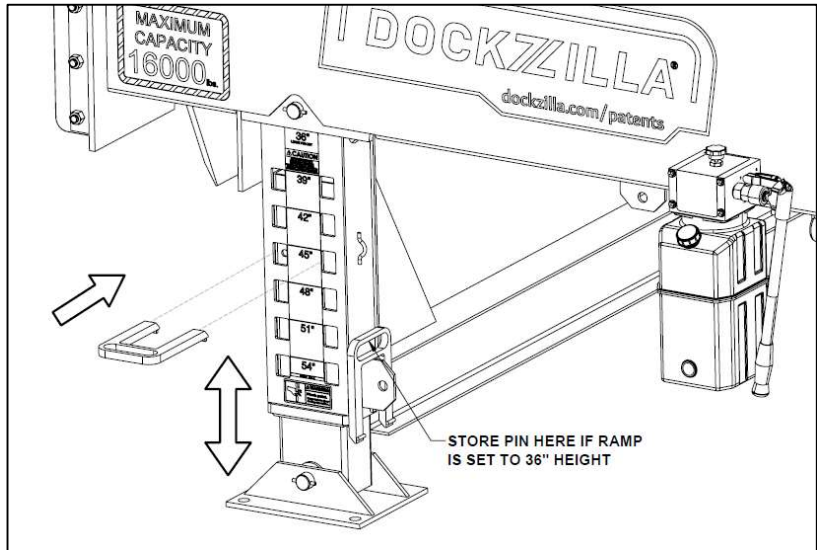


Figure 6: Adjusting Ramp Height

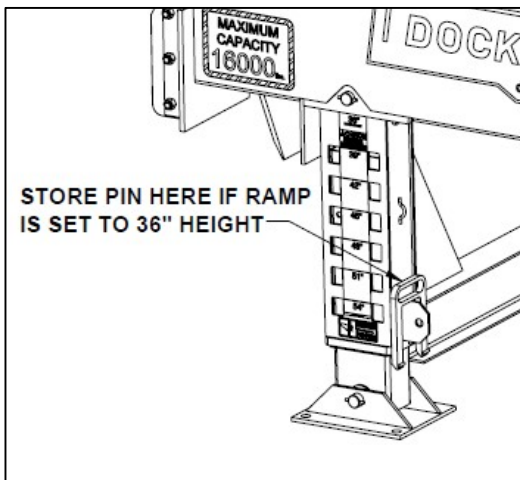


Figure 7. Storing the Pin

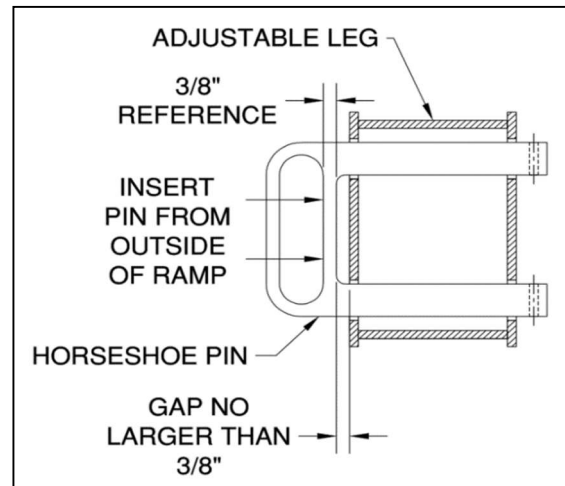


Figure 8: Proper Pin Insertion

## LOADING AND UNLOADING

1. Verbally communicate with transport vehicle driver to ensure an understanding for the loading and unloading procedure.

**CAUTION**

***Before use the loading dock must be cleared of any debris or snow and ice buildup.***

2. On trailers without rollup doors, the doors will need to be opened before backing up to the loading dock.
3. Instruct driver to back against the bumpers as parallel as possible to the ramp. Set the brakes once in position.
4. Verify the alignment of the truck/trailer with the loading dock. The truck/trailer should be relatively parallel with the ramp and in contact with at least one of the bumpers.
5. Place the wheel chocks in front of one tire on each side of the truck/trailer. Verify that the wheel chocks are engaged and secure.
6. Deploy the Dock Leveler (see “Dock Leveler Operation”).

**WARNING**

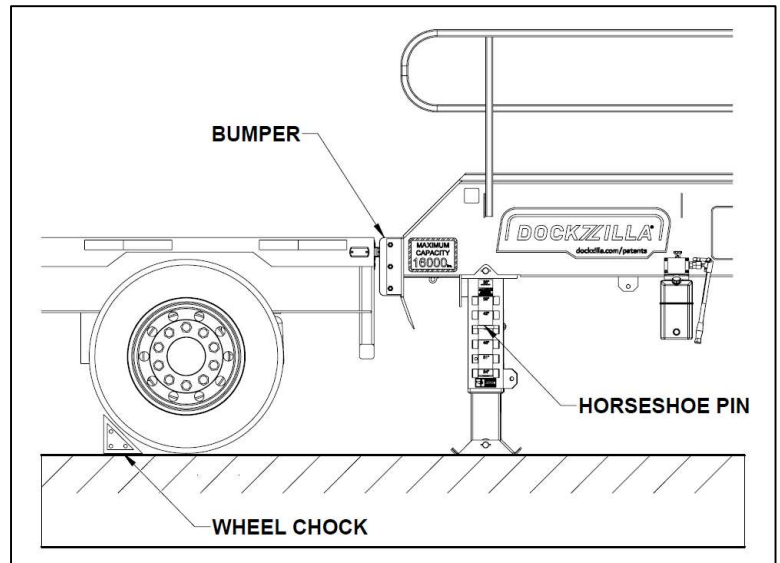
***DO NOT operate the leveler until the vehicle is parked against the dock bumpers and the vehicle has been secured.***

***NEVER enter a trailer until its brakes are set, and you have visually inspected the trailer to ensure it is securely held in place by a vehicle restraint or wheel chocks per OSHA regulations.***

7. Load and/or unload the truck.
8. When loading and/or unloading is complete, stow the Dock Leveler (see “Dock Leveler Operation”).
9. Remove wheel chocks from both sides of the truck/trailer.
10. Verify that the loading dock is clear of personnel.
11. Notify the transport vehicle driver that it is safe to leave the loading dock area.

**WARNING**

***NEVER release the vehicle restraint or remove the wheel chocks until loading/unloading is finished, doors are closed (if applicable), leveler is stowed, and area is clear of personnel.***



**Figure 9. Positioning Truck for Loading/Unloading**

## DOCK LEVELER OPERATION

Deploying the Dock Leveler (see Leveler manual for detailed operations)

1. Locate the leveler operation handle and insert it into the cup located on the right side of ramp (see Figure 10a).



**WARNING** *ALWAYS keep both hands firmly on the leveler handle while raising or lowering the leveler.*

*NEVER attempt to operate the leveler with hands or feet. The leveler handle must be used.*

*NEVER operate leveler without truck or trailer against bumper.*

2. Pull back on the handle until the leveler is fully raised (see Figure 10b).
3. Lower the dock leveler by slowly pressing the handle forward. Lip will automatically extend and lower onto the vehicle bed (see Figure 10c).
4. Once the dock leveler is resting securely on the vehicle bed, remove the handle and return it to its storage location.

Stowing the Dock Leveler (see Leveler manual for detailed operations)

1. Locate the leveler operation handle and insert it into the cup located on the right side of the ramp.
2. Pull back on handle until the lip clears the vehicle bed.
3. In a controlled manner, slowly lower the leveler into its stored position.
4. Return handle to its storage location.

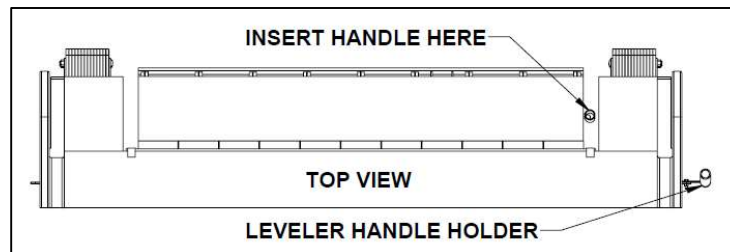


Figure 10a. Leveler Handle Locations

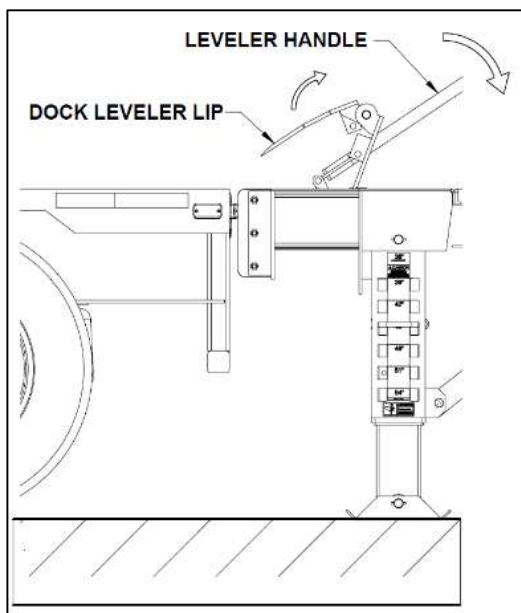


Figure 10b. Raising the leveler

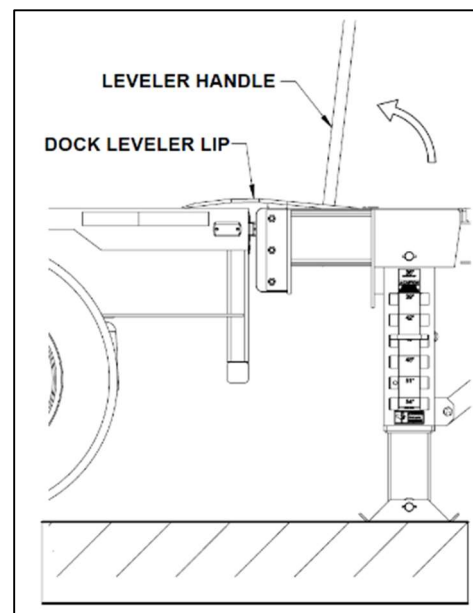


Figure 10c. Lowering Leveler onto truck/trailer

# MAINTENANCE

## WARNING

**Post safety warnings and barricade work area, at dock level and at ground level, to prevent unauthorized use of the dock position.**

## NOTICE

**Maintenance may be required more frequently at loading docks exposed to harsh environments (extreme climates, corrosive chemicals, frequency of usage exceeding 8 vehicles per day, etc.). Consult Dockzilla Co. if these conditions exist for accelerated maintenance requirements.**

**DO NOT USE SALT. If necessary, use a non-corrosive ice melt product.** Recommended Ice melt Product: **Ossian Select® Liquid De-Icer.**

## DAILY

1. Remove any debris on or around the ramp.

## QUARTERLY

1. Check hydraulic fluid level. See Figure 11. Use JAX Enviro-Guard ISO 15 hydraulic fluid.
2. Oil pump mechanism using light machine oil.
3. Inspect bumpers. Worn, loose or missing bumpers must be replaced.
4. Visually inspect all pins and moving parts for excessive wear. Replace parts as needed.
5. Visually inspect loading dock for structural damage, cracked welds, bent structural members, etc. If an issue is discovered, discontinue use of loading dock until the issue is repaired.
6. Reference Dock Leveler Manual for maintenance procedures.

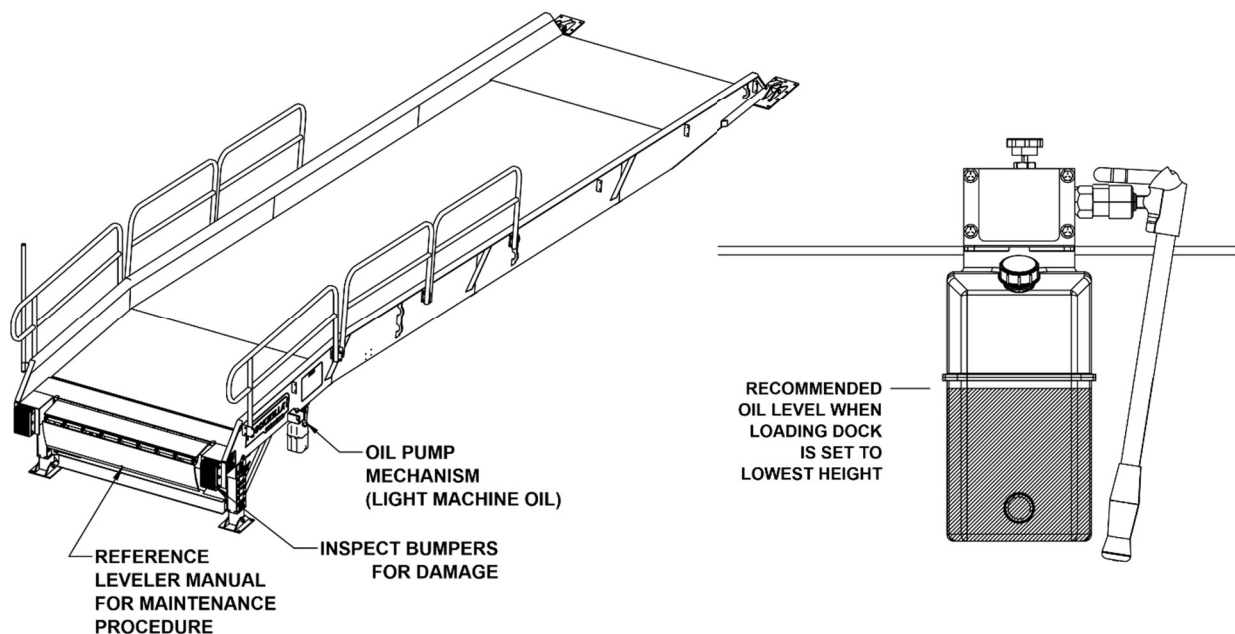


Figure 11. Maintenance Procedures

# TROUBLESHOOTING

Symptom	Probable Causes	Remedy
Ramp surface unlevel	Adjustable legs set to different heights	Set adjustable legs to same height
Ramp surface slippery/not providing enough traction	Grating worn out or smooth	Note: Grating is a wear-item that can be replaced by a qualified technician Contact Dockzilla for replacement
Loading dock does not raise or lower	<ul style="list-style-type: none"> <li>a. Obstruction preventing movement</li> <li>b. Pump relief valve open</li> <li>c. Hydraulic fluid low</li> <li>d. Broken cylinder</li> <li>e. Valve block malfunction</li> </ul>	<ul style="list-style-type: none"> <li>a. Remove obstruction</li> <li>b. Close relief valve</li> <li>c. Fill reservoir</li> <li>d. Replace cylinder</li> <li>e. Call Dockzilla</li> </ul>
Dock leveler malfunctioning	Various	See Leveler Owner's Manual

# REPLACEMENT PARTS

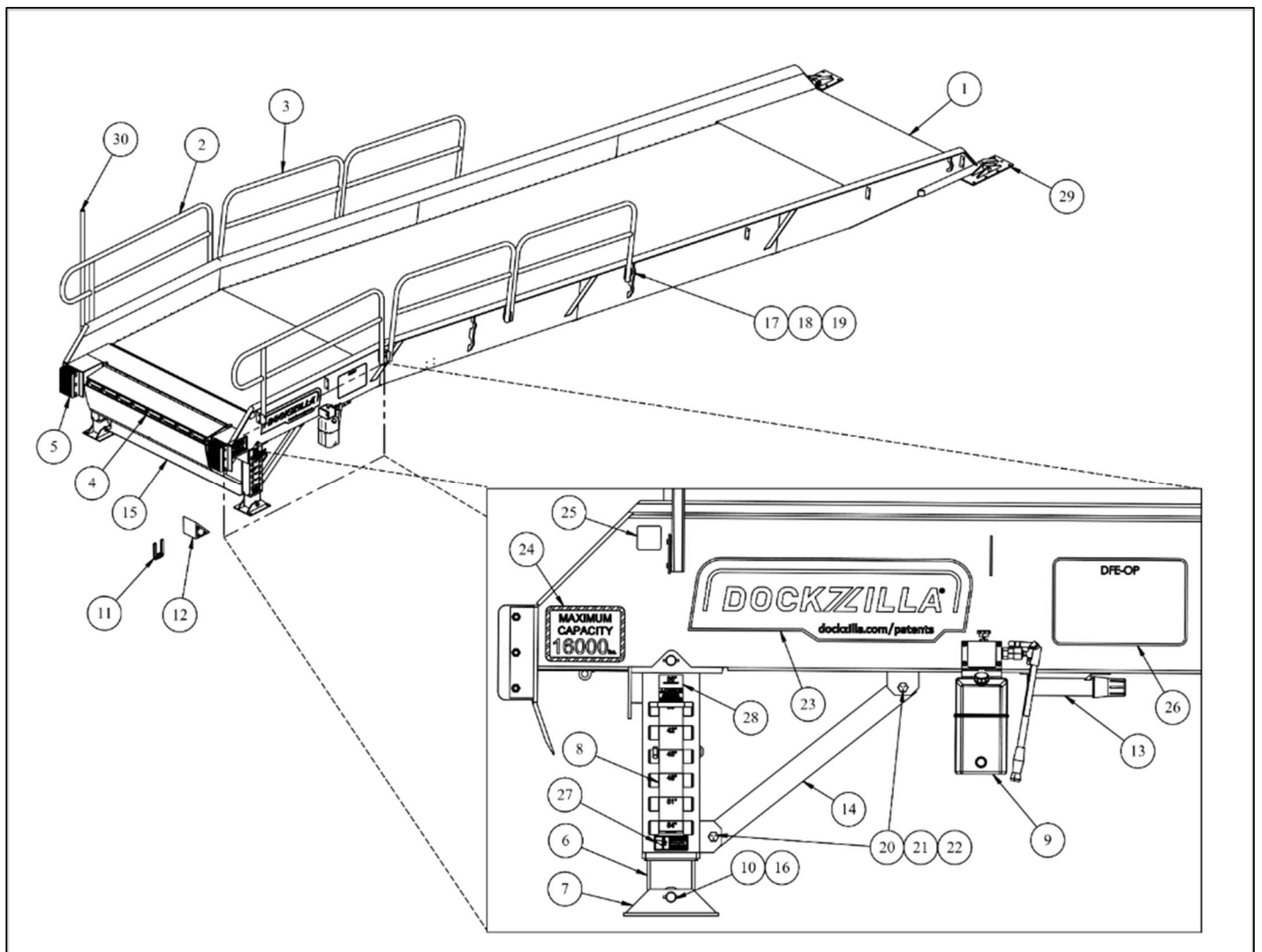


Figure 12. Replacement Parts

ITEM	DESCRIPTION	QTY	PART NUMBER
1	Ramp	1	Contact Dockzilla
2	Handrail with extension 89.50L	2	DZ1370-72
3	Handrail 72.00L	4	HRR38.5T72L14SC
4	Edge of Dock Leveler (EOD)	1	Contact Dockzilla
5	Bumper	2	B4512-11-P21
6	Inner Leg Weldment	2	DZ1208
7	Footpad Weldment	2	DZ1205
8	Leg Cylinder	2	LE 5420
9	Hydraulic Hand Pump	1	LE 5401
9.1	Hand Pump Decal	1	LE 5422
10	Adjustable Leg Pins	4	DZ1237
11	Horseshoe Pin	2	DZ1210
12	Wheel Chock	2	LE 5049
13	Owner's Manual Storage Container	1	CAN-22
13.1	Owner's Manual	1	DFE-OWN
14	Leg Brace	2	DZ1353
15	Front Brace	1	DZ1193
16	0.25 Slotted Spring Pin, Zinc Plated Steel	8	
17	0.38-16 x 1.25" Grade 5 Bolt	22	
18	0.38 Washer, Split Lock	22	
19	0.38-16 Grade 5 Nut	22	
20	0.75-10 x 1.50" Grade 5 Bolt	8	
21	0.75 Washer	8	
22	0.75 Grade 5 Nut	8	
23	Dockzilla Patent Decal	2	LE 3974
24	Capacity Decal	2	LE 5499-XX
25	Serial Tag	2	LE 1234
26	Operation Decal	1	DFE-OP
27	Pinch Point Decal	2	LE 5277
28	Leg Height Decal	2	LE 5140
29	Impactable Base Plate	2	LE 5020
30	EOD Handle	1	LE 5481
31	EOD Handle Holder	1	DZ1352
32	0.75 x 6.00" Titen HD Anchors	18	THDT75600H
	↓ SEE PAGE 15 FOR THE FOLLOWING ITEMS (MODELS ENDING "D" ONLY)		
33	Hydraulic Power Unit, 12V	1	HPU2DC
33.1	2 Button Remote Pendant	1	395-55
33.2	Optima Blue Marine Battery D34M	1	9016-103
33.3	DC Circuit Breaker, 250A 3/8" Stud	1	174-S2-250-2
33.4	Master Battery Disconnect Switch	1	75920-WAYTEK
33.5	12V Battery Charger	1	Contact Dockzilla
34	HPU Enclosure Mounting Bracket Kit	1	DZ1375
35	Solar Panel Kit (varies based on customer needs)	1	Contact Dockzilla

### HYDRAULIC POWER UNIT (OPTION)

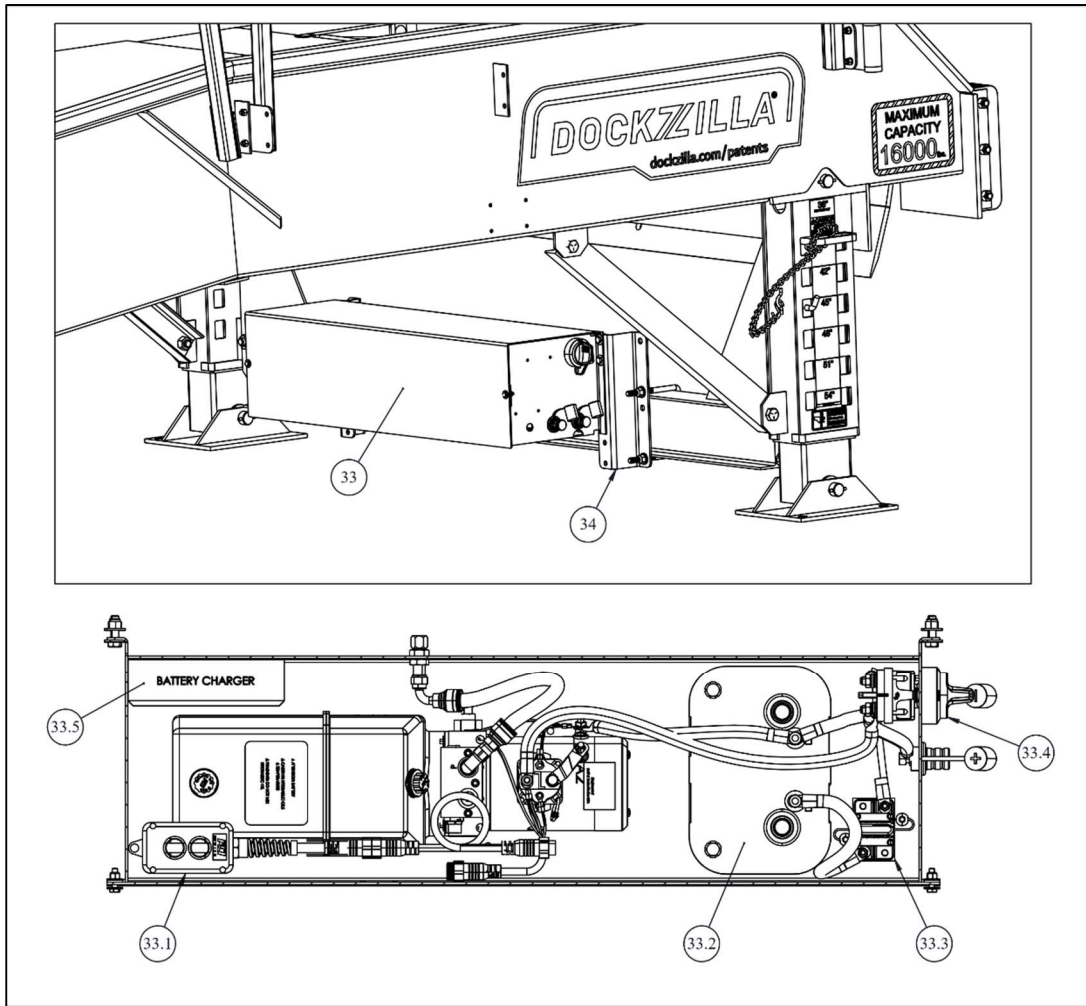


Figure 13. Power Unit Replacement Parts

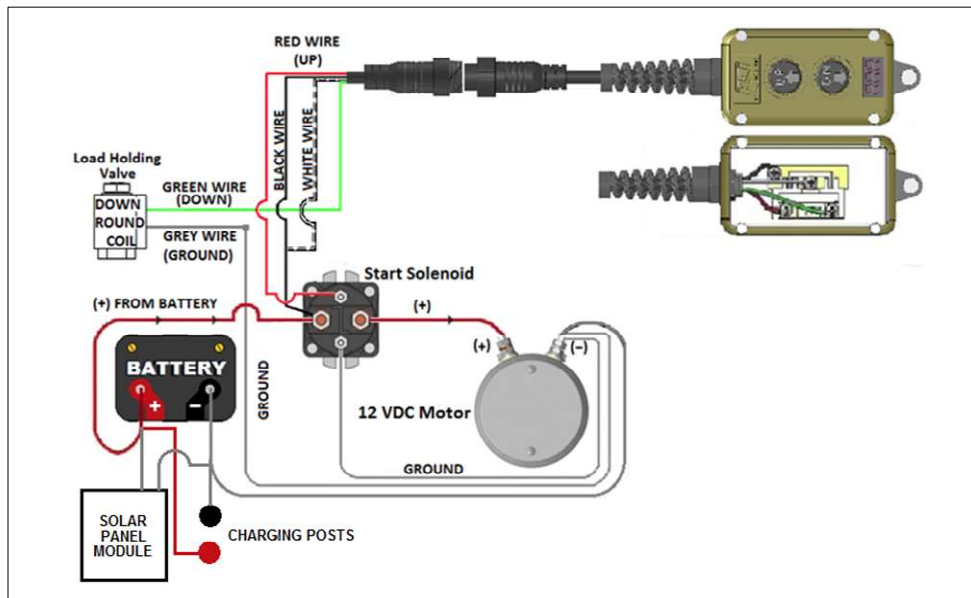


Figure 14. Power Unit Wiring Schematic



# HYDRAULICS

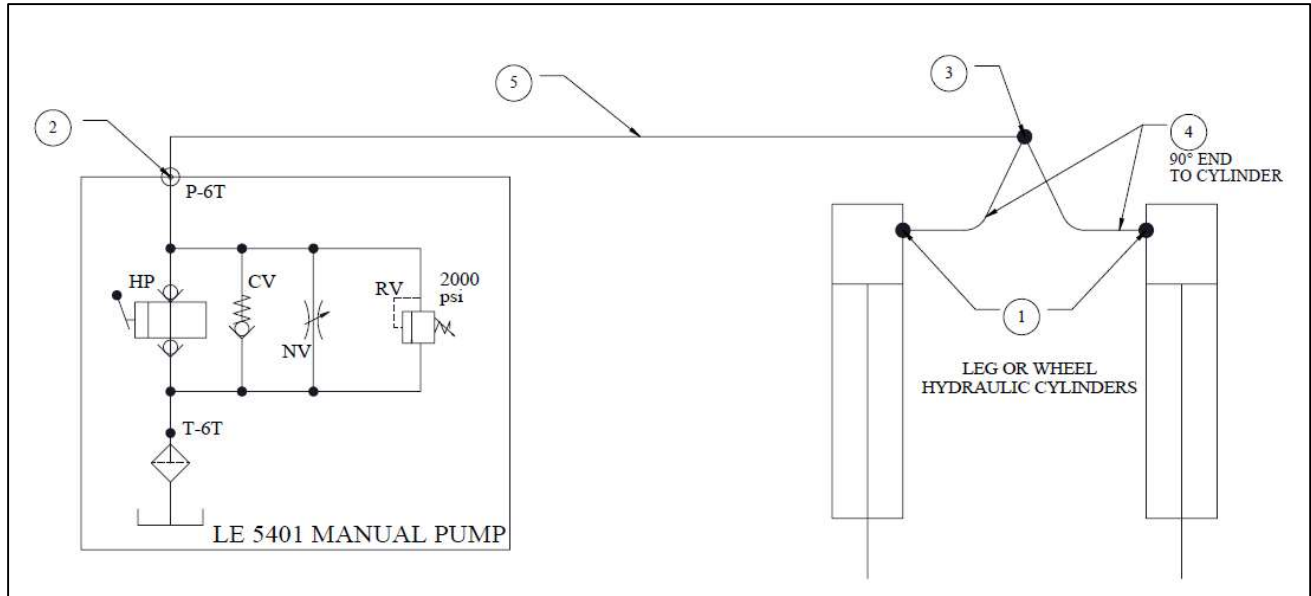


Figure 15. Hydraulic Hand Pump Schematic (96" Wide Units Only)

Item	Part Number	Description	Quantity
1	6400-L-06-06	FITTING, STRAIGHT ADAPTER #6SAE MALE-#6 JIC MALE (LONG)	2
2	6801-06-06	FITTING, 90° ADAPTER, #6 SAE ORB MALE #6 JIC MALE	1
3	2603-06-06-06	FITTING, TEE #6JIC MALE - #6JIC MALE - #6 JIC MALE	1
4		HOSE, #6JIC ST FEMALE - #6 HOSE -#6JIC 90° FEMALE X 48" LONG	2
5		HOSE, #6JIC ST FEMALE - #6 HOSE -#6JIC ST FEMALE X 105" LONG	1

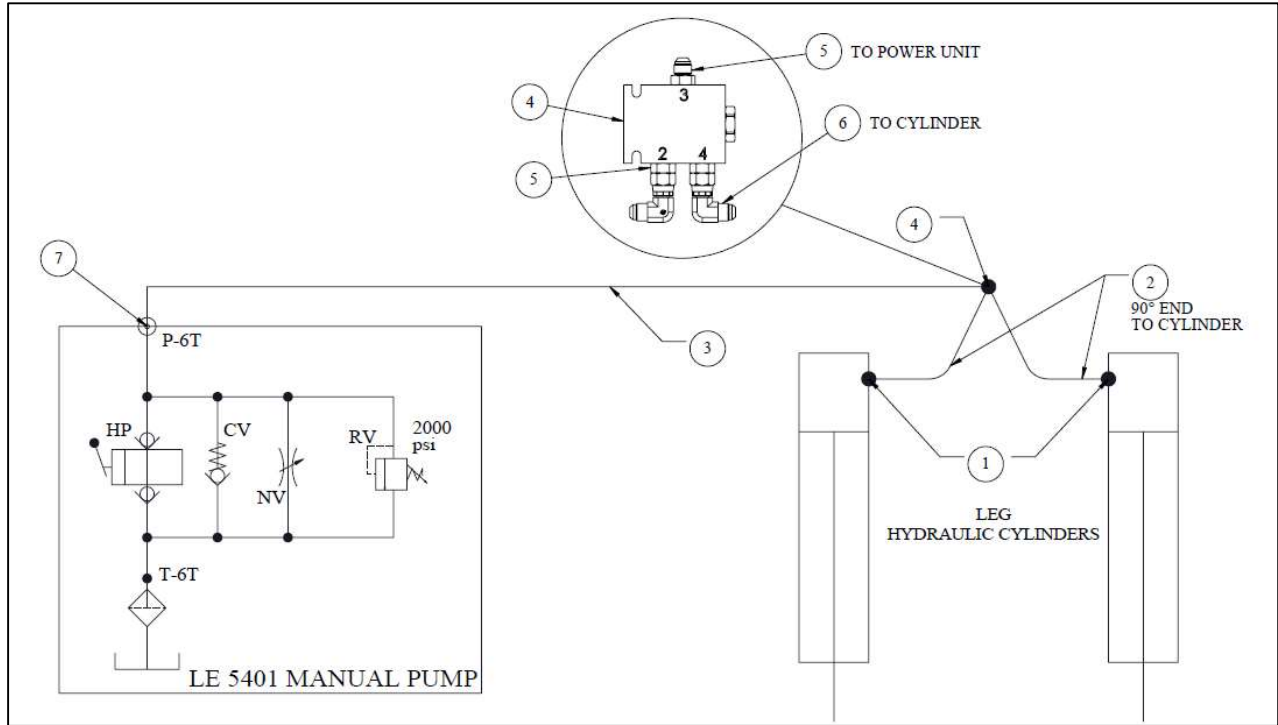


Figure 16. Hydraulic Hand Pump Schematic (114" Wide Units Only)

Item	Part Number	Description	QTY
1	6400-L-06-06	FITTING, STRAIGHT ADAPTER #6SAE MALE-#6 JIC MALE (LONG)	2
2		HOSE, #6JIC ST FEMALE - #6HOSE - #6JIC 90° FEMALE X 55" LONG, FC639	2
3		HOSE, #6JIC ST FEMALE - #6 HOSE - #6JIC 90° FEMALE X 68" LONG, FC639	1
4	FD50-45-6T-N-22	FLOW DIVIDER/COMBINER FD50-45-6T-N-22	1
5	6400-06-06	FITTING, STRAIGHT ADAPTER #6SAE MALE-#6 JIC MALE	3
6	6500-06-06	FITTING, 90° ADAPTER, #6 JIC MALE - #6 JIC FEMALE SWIVEL	2
7	6801-06-06	FITTING, 90° ADAPTER, #6 ORB MALE - #6 JIC MALE	1

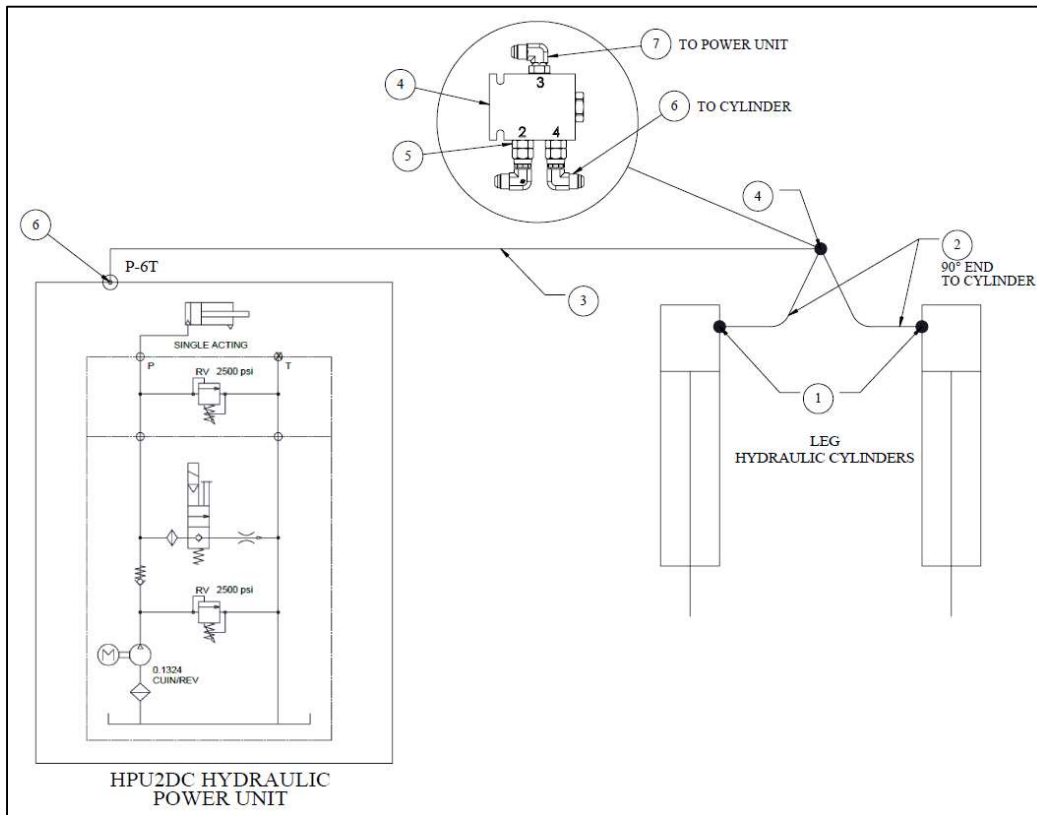


Figure 17. DC Powered Hydraulic Pump Schematic

Item	Part Number	Description	Quantity	
			96W	114W
1	6400-L-06-06	FITTING, STRAIGHT ADAPTER #6SAE MALE-#6 JIC MALE (LONG)	2	
2		HOSE, #6JIC ST FEMALE - #6 HOSE -#6JIC 90° FEMALE X 46" LONG	2	0
2		HOSE, #6JIC ST FEMALE - #6 HOSE -#6JIC 90° FEMALE X 55" LONG	0	2
3		HOSE, #6JIC ST FEMALE - #6 HOSE -#6JIC 90° FEMALE X 24" LONG	1	
4	FD50-45-6T-N-22	FLOW DIVIDER/COMBINER FD50-45-6T-N-22	1	
5	6400-06-06	FITTING, STRAIGHT ADAPTER, #6SAE MALE - #6JIC MALE	2	
6	6500-06-06	FITTING, ADAPTER 90°, #6JIC MALE - #6JIC FEMALE SWIVEL	3	
7	6801-06-06	FITTING, ADAPTER 90° #6ORB MALE - #6JIC MALE	1	

## STANDARD WARRANTY

Dockzilla Co. warrants that its products will be free from defects in design, materials, and workmanship for a period of 365 days from the date of shipment. All claims for breach of this warranty must be made within 30 days after defect is or can, with reasonable care, be detected and in no event no more than 30 days after the warranty has expired. In order to be entitled to the benefits of this warranty, the products must have been properly installed, maintained, and operated within their rated capacities and/or specified design parameters, and not otherwise abused. Periodic lubrication and adjustment is the sole responsibility of the owner. This warranty is Dockzilla Co. exclusive warranty. DOCKZILLA CO. EXPRESSLY DISCLAIMS ALL IMPLIED WARRANTIES, INCLUDING THE IMPLIED WARRANTIES OF MECHANICALITY AND FITNESS. Non-standard warranties, if any, must be specified to Dockzilla Co. in writing.

### LIMITATION OF LIABILITY

**DOCKZILLA CO. SHALL NOT IN ANY EVENT BE LIABLE FOR ANY LOSS OF USE OF ANY EQUIPMENT OR INCIDENTAL OR CONSEQUENTIAL DAMAGES OF ANY KIND, WHETHER FOR BREACH OF WARRANTY, NEGLIGENCE, OR STRICT LIABILITY.**



### Sales & Service:

Dockzilla Co.  
12400 Whitewater Dr., Suite 110  
Minnetonka, MN 55343

Phone: 1-800-637-3036

Fax: 952-401-0126